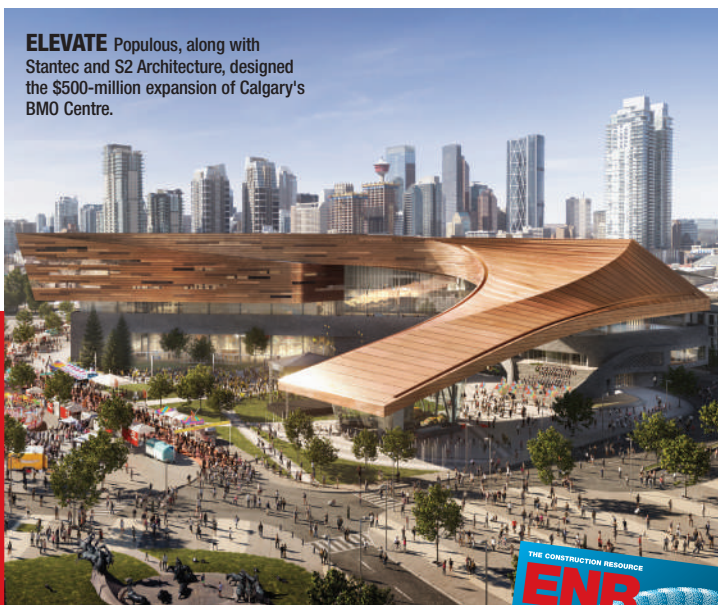


# ENR THE TOP 500 SOURCEBOOK

## Design Firms Build Capacity Amid Rising Demands

Money from the \$1.2-trillion Infrastructure Investment and Jobs Act has yet to reach most state agencies, but design firms report being busy with value-engineering projects up to the shovel-ready phase. Owners appear revved up and ready to take advantage of federal funding, needing design firms more than ever to keep projects from getting stalled in a market plagued by shortages.

NUMBER 107



**ELEVATE** Populous, along with Stantec and S2 Architecture, designed the \$500-million expansion of Calgary's BMO Centre.

Overwhelmingly, the Top 500 Design Firms say staffing is their No. 1 priority going into the COVID-19 pandemic's third year, but revenue numbers show that firms are learning to do more with fewer hands on deck—at least for now. For the sixth consecutive year, total revenue for the Top 500-listed firms increased—rising 2.2% to tally \$107.11 billion in 2021. Median firm revenue has also rebounded after a dip last year, rising 3.8%, to \$67.45 million.

Faced with rising inflation costs, firms are finding that they need greater capacity to meet demands for compressed delivery of design packages and construction schedules to avoid potential cost increases.

“The name of the game is building a strong AEC team committed to serving clients to help them meet their goals,” says Kevin McNutt, director of engi-

neering at BSA LifeStructures. A team must be “open and flexible to the unexpected along the way,” he adds. How firms go about creating these teams seems to be as diverse as the firms themselves.

### People as a Priority

A major part of the IIJA is navigating its stipulations for funding. The moment Congress passed the act, many firms found a need for scaling up their staffing to simply provide assistance for helping clients understand opportunities available to them.

“The world has changed in many ways over the past few years, and if your organization has not changed with it,

retaining talent will be very difficult,” says Sasaki CEO James Miner. There have been multiple studies that show work-life balance, wages and quality of work and culture all play a role in staff retention, adds Miner.

Where AECOM believes it sets itself apart is through a focus on shared success that includes, “on one hand, providing our people with challenging work on exciting, impactful projects while encouraging continuous learning and technical skills development,” explains president Lara Poloni.

“On the other hand,” Poloni adds, the company emphasizes “driving career satisfaction, success and balance through competitive compensation, growing benefits offerings and a commitment to genuine workplace flexibility via our Freedom to Grow philosophy.” These elements combined to drive both professional and organizational growth, she adds, but there is no one size fits all for recruitment.

Houston-based civil engineering firm DEC says it has filled most of its staffing

requirements using typical recruiting methods. But on the other end, SmithGroup says that it still has 150 positions to fill despite hiring more than 150 people in the last sixth months. “Our challenge is not unique,” says president and managing partner Mike Medici.

“Our workload continues to grow, which is a positive thing, but we must continue to find high-quality talent to fulfill our clients’ needs.”

He adds, “It may sound cliché, but we have found that our strongest selling point (and retention tool) is our culture.” When the company culture is the right fit, firms find they don’t have to do much more to build dynamic teams.



# Sacramento Health Tower

SmithGroup Designing \$3.75B UC Davis Facility



**EXPANSION**  
The project, set for completion in 2030, will add a combined 1 million sq ft of new space.

approximately 400 new private patient rooms. The patient rooms will be “acute adaptable,” according to UC Davis Health, enabling them to potentially be used as temporary ICU rooms with air isolation, if needed. UC Davis Health says the design gives the future facility the flexibility to handle a surge in critical care cases, such as during a pandemic, massive wildfire or radiation leak. Other features include operating rooms, an imaging center, facilities for an existing pharmacy and burn care units. Demolition and site preparation are underway, with detailed design phases continuing through 2023. ■

*By Bruce Buckley*

## HDR

### University of California San Francisco Helen Diller Medical Center at Parnassus Heights

HDR and Herzog & de Meuron are designing a new hospital at the University of California San Francisco Helen Diller Medical Center at Parnassus Heights. The University of California Board of Regents recently approved plans to build the \$4.3-billion facility, which is scheduled to open in 2030. The 15-story hospital will expand capacity for additional acute, emergency and intensive care beds. Overall bed capacity will increase to 682 beds, from 475 beds in 2020, when the facility is complete. The new hospital aims to increase capacity during public health crises, rather than reducing or canceling non-essential surgeries to make room for patients with urgent needs.

## SOM

### New Federal Courthouse, Fort Lauderdale, Fla.

The U.S. General Services Administration recently approved Skidmore, Owings & Merrill’s design concept for a federal courthouse in Fort Lauderdale, Fla. The ten-story, 252,000-sq-ft building will be sited on the southern bank of the Tarpon River, offering green spaces, including a riverfront trail. The building is targeting both LEED Gold and SITES Silver certification. The courthouse is projected to achieve a 30% reduction in energy use over baseline levels. A design-build contract is scheduled to be awarded this fall, with a construction start anticipated in 2023 and completion in 2026. When completed, the building will include twelve courtrooms, seventeen judges’ chambers, and workspace for other federal agencies.

# 53.5

May’s Architecture Billings Index, calculated by the American Institute of Architects, is down slightly from April’s score of 56.5. A score above 50 indicates billings growth.

- American Institute of Architects



## HOK

### FRANK E. MOSS US COURTHOUSE

Ground was recently broken on the \$116-million renovation of the Frank E. Moss U.S. Courthouse in Salt Lake City, which was designed by HOK. GSA awarded the renovation contract to locally operated Big-D Construction. Renovations are scheduled to complete in 2024. The scope includes a seismic retrofit, backfill and the renovation of the existing courthouse, which was originally built in 1905 in Salt Lake City’s Exchange Place Historic District. HOK’s design services aim to preserve and restore building history while transforming it into a modern office space.

# The Top Design Firms in General Building

## GENERAL BUILDING

RANK	FIRM	REVENUE (\$ MIL.)
1	AECOM	1,686.1
2	GENSLER	1,220.7
3	JACOBS	921.1
4	KIMLEY-HORN	729.5
5	PERKINS&WILL	524.7
6	HDR	503.2
7	STANTEC INC.	471.0
8	HKS	400.5
9	HOK	378.6
10	TERRACON CONSULTANTS INC.	364.2
11	WSP USA	353.1
12	CANNONDESIGN	345.0
13	TETRA TECH INC.	301.0
14	SMITHGROUP	298.0
15	UNIVERSAL ENGINEERING SCIENCES	294.9
16	IBI GROUP INC.	286.8
17	SKIDMORE OWINGS & MERRILL	285.5
18	PERKINS EASTMAN	274.7
19	ARCADIS NORTH AMERICA/CALLISON RTKL	270.6
20	DLR GROUP	268.7
21	NBBJ	256.1
22	EXP	254.3
23	IMEG CORP.	247.5
24	BURNS & MCDONNELL	236.4
25	THORNTON TOMASETTI	230.1
26	NV5 GLOBAL INC.	219.9
27	ARUP	219.7
28	PAGE	217.0
29	LANGAN	208.8
30	ZGF ARCHITECTS	193.3
31	INTERTEK-PSI	191.4
32	SALAS O'BRIEN	179.1
33	KOHN PEDERSEN FOX ASSOCIATES PC	173.8
34	ENGINEERING CONSULTING SERVICES (ECS)	168.9
35	HGA	164.4
36	DEWBERRY	159.4
37	KPFF CONSULTING ENGINEERS	158.4
38	PBK	155.2
39	HENDERSON ENGINEERS INC.	147.6
40	OLSSON INC.	140.0
41	JENSEN HUGHES	138.0
42	WILLDAN	136.1
43	WISS JANNEY ELSTNER ASSOCIATES	133.8
44	NORR	133.6
45	FLAD ARCHITECTS	132.8
46	AFFILIATED ENGINEERS INC.	125.4
47	EYP ARCHITECTURE & ENGINEERING	123.5
48	PAPE-DAWSON ENGINEERS INC.	123.3
49	CHA CONSULTING INC. (CHA)	118.8
50	BLACK & VEATCH	115.3

## RETAIL

RANK	FIRM	REVENUE (\$ MIL.)
1	KIMLEY-HORN	195.3
2	ARCADIS NORTH AMERICA/CALLISON RTKL	100.1
3	GENSLER	79.6
4	HENDERSON ENGINEERS INC.	78.7
5	TERRACON CONSULTANTS INC.	75.1
6	TETRA TECH INC.	45.0
7	NORR	43.2
8	GREENBERGFARROW	38.1
9	MBH ARCHITECTS	28.9
10	CORE STATES GROUP	26.9
11	JACOBS	23.7
12	INTERTEK-PSI	22.5
13	BOWMAN CONSULTING GROUP	18.5
14	AO ARCHITECTS	18.4
15	STANTEC INC.	18.0
16	EXP	17.4
17	OLSSON INC.	16.6
18	WALTER P MOORE	16.4
19	AECOM	16.2
20	CUSHING TERRELL	16.2
21	CHA CONSULTING INC. (CHA)	12.8
22	MS CONSULTANTS INC.	12.8
23	HALFF ASSOCIATES INC.	10.5
24	T.Y. LIN INTERNATIONAL	10.5
25	WOOLPERT INC.	9.7

## COMMERCIAL OFFICES

RANK	FIRM	REVENUE (\$ MIL.)
1	GENSLER	677.9
2	AECOM	221.4
3	NBBJ	146.7
4	ARUP	126.3
5	THORNTON TOMASETTI	91.4
6	TETRA TECH INC.	90.0
7	JACOBS	75.4
8	HKS	75.0
9	BURNS & MCDONNELL	66.8
10	WSP USA	65.5
11	HDR	54.7
12	KOHN PEDERSEN FOX ASSOCIATES PC	52.4
13	ELKUS MANFREDI ARCHITECTS	50.3
14	STANTEC INC.	46.3
15	DLR GROUP	42.1
16	SALAS O'BRIEN	41.0
17	ZGF ARCHITECTS	40.5
18	TERRACON CONSULTANTS INC.	40.1
19	INTERTEK-PSI	38.1
20	SMITHGROUP	37.0
21	CORGAN	33.2
22	KENDALL/HEATON ASSOCIATES INC.	32.0
23	HGA	31.9
24	IMEG CORP.	28.8
25	OLSSON INC.	28.8

\*BASED ON 2021 DESIGN REVENUE FROM GENERAL BUILDING AS REPORTED IN ENR'S SURVEY OF LEADING CONTRACTORS AND DESIGN FIRMS. SEE ENR.COM FOR EXPANDED LISTINGS.

## GOVERNMENT OFFICES

RANK	FIRM	REVENUE (\$ MIL.)
1	AECOM	429.1
2	JACOBS	397.3
3	BURNS & MCDONNELL	169.6
4	BLACK & VEATCH	114.2
5	HDR	108.8
6	TETRA TECH INC.	96.0
7	WSP USA	89.8
8	EXP	75.3
9	MICHAEL BAKER INTERNATIONAL	63.7
10	GENSLER	55.6
11	SALAS O'BRIEN	50.1
12	THORNTON TOMASETTI	41.2
13	STANLEY CONSULTANTS	40.7
14	DEWBERRY	39.0
15	TERRACON CONSULTANTS INC.	38.0
16	SNC-LAVALIN INC.	33.7
17	POND	31.8
18	WHITMAN REQUARDT AND ASSOCIATES LLP	31.7
19	CLARK NEXSEN	30.8
20	CHA CONSULTING INC. (CHA)	29.3
21	ZGF ARCHITECTS	28.7
22	IMEG CORP.	28.3
23	DAY & ZIMMERMANN	26.5
24	EYP ARCHITECTURE & ENGINEERING	25.6
25	SMITHGROUP	24.4

## EDUCATION

RANK	FIRM	REVENUE (\$ MIL.)
1	AECOM	195.4
2	PBK	155.2
3	DLR GROUP	132.7
4	JACOBS	87.9
5	HUCKABEE	82.6
6	CANNONDESIGN	71.0
7	STANTEC INC.	68.9
8	SMITHGROUP	59.9
9	PERKINS EASTMAN	55.5
10	GENSLER	52.5
11	LPA INC.	48.1
12	SALAS O'BRIEN	47.5
13	IMEG CORP.	47.5
14	STV GROUP INC.	45.6
15	NAC ARCHITECTURE	45.1
16	AYERS SAINT GROSS	42.6
17	HMC ARCHITECTS	42.5
18	CORGAN	34.2
19	TERRACON CONSULTANTS INC.	33.1
20	WSP USA	32.9
21	CO ARCHITECTS	31.7
22	HDR	31.5
23	HED	29.4
24	GMB ARCHITECTURE + ENGINEERING	28.1
25	EXP	27.6

## CORRECTIONAL FACILITIES

RANK	FIRM	REVENUE (\$ MIL.)
1	AECOM	56.0
2	HDR	18.1
3	DLR GROUP	11.5
4	NORR	11.3
5	RATCLIFF	10.3
6	STV GROUP INC.	7.7
7	DLZ CORP.	6.6
8	TREANORHL	6.2
9	LIONAKIS	5.0
10	OLSSON INC.	3.7

## HEALTH CARE

RANK	FIRM	REVENUE (\$ MIL.)
1	JACOBS	278.0
2	HDR	277.1
3	AECOM	251.6
4	CANNONDESIGN	230.0
5	HKS	200.0
6	WSP USA	118.5
7	SMITHGROUP	112.4
8	PERKINS EASTMAN	105.9
9	NBBJ	83.4
10	IMEG CORP.	80.2
11	GRESHAM SMITH	79.6
12	STANTEC INC.	75.2
13	EYP ARCHITECTURE & ENGINEERING	74.9
14	HGA	74.8
15	GENSLER	66.5
16	ZGF ARCHITECTS	64.9
17	TETRA TECH INC.	61.0
18	E4H ENVIRONMENTS FOR HEALTH ARCHITECTURE	60.1
19	KIMLEY-HORN	56.1
20	SMITH SECKMAN REID INC.	51.0
21	EXP	39.4
22	HMC ARCHITECTS	38.3
23	LEO A DALY	37.2
24	ARCADIS NORTH AMERICA/CALLISON RTKL	35.2
25	TLC ENGINEERING SOLUTIONS INC.	34.2

## HOTELS, MOTELS AND CONVENTION CENTERS

RANK	FIRM	REVENUE (\$ MIL.)
1	GENSLER	54.9
2	WATG	45.3
3	HKS	43.0
4	AECOM	26.8
5	REBEL DESIGN+GROUP	19.0
6	PERKINS EASTMAN	18.3
7	ARCADIS NORTH AMERICA/CALLISON RTKL	15.8
8	EXP	15.7
9	LEO A DALY	14.1
10	STANTEC INC.	12.2
11	COOPER CARRY	11.9
12	KIMLEY-HORN	11.8
13	EUA (EPPSTEIN UHEN ARCHITECTS INC.)	11.7
14	DLR GROUP	10.5
15	POPULOUS	10.4
16	BASKERVILL	9.4
17	TERRACON CONSULTANTS INC.	8.5
18	FENTRESS ARCHITECTS	8.3
19	IMEG CORP.	8.2
20	WSP USA	6.5

## MULTI-UNIT RESIDENTIAL

RANK	FIRM	REVENUE (\$ MIL.)
1	KIMLEY-HORN	240.8
2	AECOM	123.2
3	SOLOMON CORDWELL BUENZ (SCB)	56.1
4	KTGY ARCHITECTURE + PLANNING	52.7
5	STANTEC INC.	51.5
6	GENSLER	41.0
7	THORNTON TOMASETTI	39.0
8	TERRACON CONSULTANTS INC.	36.0
9	AO ARCHITECTS	35.8
10	JORDAN & SKALA ENGINEERS	27.6
11	PARSONS CORP.	25.6
12	DESIMONE CONSULTING ENGINEERS	25.3
13	PERKINS EASTMAN	22.4
14	INTERTEK-PSI	22.1
15	NORR	20.6
16	ARCADIS NORTH AMERICA/CALLISON RTKL	20.5
17	WSP USA	19.1
18	MICHAEL BAKER INTERNATIONAL	18.8
19	SALAS O'BRIEN	18.1
20	WITHERSRAVENEL INC	17.7
21	OLSSON INC.	17.6
22	WDG ARCHITECTURE	17.1
23	HR GREEN INC.	16.7
24	COOPER CARRY	16.6
25	EXP	16.4

## ENTERTAINMENT

RANK	FIRM	REVENUE (\$ MIL.)
1	POPULOUS	36.7
2	GENSLER	33.5
3	JACOBS	30.8
4	AECOM	19.9
5	KIMLEY-HORN	18.5
6	JCJ ARCHITECTURE	18.0
7	EXP	16.3
8	IMEG CORP.	10.5
9	BRPH COS. INC.	6.7
10	CUNINGHAM	6.7

## CULTURAL AND CIVIC

RANK	FIRM	REVENUE (\$ MIL.)
1	AECOM	35.9
2	DLR GROUP	24.9
3	CANNONDESIGN	24.0
4	GENSLER	18.6
5	STANTEC INC.	12.2
6	HGA	11.8
7	THORNTON TOMASETTI	10.8
8	ARUP	9.9
9	ARCADIS NORTH AMERICA/CALLISON RTKL	8.7
10	SMITHGROUP	8.6

## DISTRIBUTION AND WAREHOUSES

RANK	FIRM	REVENUE (\$ MIL.)
1	KIMLEY-HORN	120.3
2	TERRACON CONSULTANTS INC.	68.4
3	CHA CONSULTING INC. (CHA)	65.2
4	STANTEC INC.	61.3
5	INTERTEK-PSI	28.8
6	HENDERSON ENGINEERS INC.	22.1
7	WOOD	15.6
8	ARCADIS NORTH AMERICA/CALLISON RTKL	15.2
9	GANNETT FLEMING	12.6
10	HALFF ASSOCIATES INC.	12.1

## SPORTS

RANK	FIRM	REVENUE (\$ MIL.)
1	POPULOUS	117.8
2	AECOM	36.8
3	GENSLER	35.8
4	KIMLEY-HORN	33.4
5	HKS	24.0
6	ME ENGINEERS	23.3
7	HNTB COS.	16.8
8	WALTER P MOORE	11.8
9	HENDERSON ENGINEERS INC.	11.5
10	THORNTON TOMASETTI	11.4

## MIXED USE

RANK	FIRM	REVENUE (\$ MIL.)
1	AECOM	264.4
2	GENSLER	104.6
3	STANTEC INC.	90.6
4	KOHN PEDERSEN FOX ASSOCIATES PC	77.3
5	KIMLEY-HORN	53.2
6	PERKINS EASTMAN	32.7
7	HKS	29.7
8	OLSSON INC.	29.6
9	ARCADIS NORTH AMERICA/CALLISON RTKL	29.5
10	BOWMAN CONSULTING GROUP	26.8
11	ELKUS MANFREDI ARCHITECTS	26.7
12	DLR GROUP	19.3
13	EXP	16.0
14	KTGY ARCHITECTURE + PLANNING	14.6
15	AO ARCHITECTS	13.0
16	STEINBERG HART	12.7
17	IMEG CORP.	11.4
18	CARRIER JOHNSON + CULTURE	11.1
19	DESIMONE CONSULTING ENGINEERS	10.6
20	LRK INC.	10.2

## 237 MILLION

Total public transportation boardings recorded April 1-30, 2022. (Modes include bus, trolleybus, and heavy, light and passenger rail.) The figure is nearly a six-fold increase from April 2020, but barely over half of the pre-pandemic high of 449 million trips, recorded in October 2019.

- USDOT Bureau of Transportation Statistics

### VHB LONG BRIDGE

The sole railroad bridge connecting Virginia and Washington, D.C., will soon have some company. VHD is performing preliminary engineering on the Virginia Passenger Rail Authority's plan to complement the existing Long Bridge with a new two-track bridge and associated infrastructure. Along with eliminating existing congestion issues and improving system reliability, the expanded four-track Potomac River crossing will provide additional capacity to support expected increases in freight and passenger rail traffic in the corridor.



**SAFETY** Atkins is designing safety improvements to Colorado's increasingly congested I-70 Mountain Corridor.

# Designing a Mountain Highway Makeover

I-70 upgrades aim to improve safety, capacity and reliability

**R**elief is on the way for a six-mile segment of Colorado's notoriously congested I-70 Mountain Corridor, beginning with a \$31-million design engineering contract awarded to Atkins by the Colorado Dept. of Transportation. Part of a route between Denver and Glenwood that has become increasingly burdened with higher traffic volume in recent years, the section between Floyd Hill and Idaho Springs will undergo improvements such as replacing deficient infrastructure, adding a lane to increase capacity, and curve safety modifications that should improve travel speeds and sight distance while also helping to reduce the number of accidents. In addition to addressing resiliency and rockfall in Clear Creek Canyon, the project will provide a frontage road connection to improve emergency access and mobility during severe weather and facilitate efficient freight movement. ■

*By Jim Parsons*

### Kimley-Horn Gold Line BRT

Design is complete on the METRO Gold Line, Minnesota's first bus rapid transit line, which will connect St. Paul with its eastern suburbs. Lead designer Kimley-Horn integrated the new 10-mile transitway and 21 stations along a corridor largely parallel to Interstate 94. Approximately 70% of the route will have bus-only lanes. Major construction is set to get underway later this year, with passenger service beginning in 2025.

### Arup/WSP Link21 Transit Program

The joint venture of Arup and WSP is providing planning and engineering services for Bay Area Rapid Transit's Link21 program, which aims to create a faster, more integrated transit system across a 21-county region. The multi-project program includes the new Transbay Rail Crossing, which will connect Oakland and San Francisco through a new rail service across the San Francisco Bay. The crossing will help address high levels of congestion in the existing Transbay corridor as well as provide a direct connection for regional rail riders.

### RS&H Harkers Island Bridge Replacement

A 45-year-old two-bridge span connecting Harkers Island, N.C., with the mainland is on its way to being replaced with a single, 3,200-ft long fixed structure that will include a 45-ft-high navigation span over the Straits Waterway. The RS&H design team had to consider a variety of issues in shaping the structure, including integrating new approaches on existing causeways in the sensitive coastal environment. Upon completion of the new bridge in 2025, the existing structure will provide pedestrian access to a midpoint fishing island.

# The Top Design Firms in Transportation

## TRANSPORTATION

RANK	FIRM	REVENUE (\$ MIL.)
1	AECOM	3,279.0
2	JACOBS	2,897.3
3	HNTB COS.	1,433.9
4	WSP USA	1,243.4
5	HDR	1,093.2
6	PARSONS CORP.	928.8
7	KIMLEY-HORN	517.3
8	T.Y. LIN INTERNATIONAL	472.5
9	STANTEC INC.	462.0
10	STV GROUP INC.	444.9
11	SNC-LAVALIN INC.	432.1
12	GANNETT FLEMING	389.7
13	MICHAEL BAKER INTERNATIONAL	375.5
14	MOTT MACDONALD	319.5
15	JOHNSON MIRMIRAN & THOMPSON INC. (JMT)	306.1
16	RS&H INC.	305.9
17	EXP	257.6
18	TRANSYSTEMS	256.2
19	MOFFATT & NICHOL	246.2
20	KIEWIT CORP.	241.1
21	WOOD	227.8
22	RK&K	226.3
23	ARUP	222.0
24	CONSOR ENGINEERS	210.4
25	GREENMAN-PEDERSEN INC. (GPI)	200.3
26	CDM SMITH	198.8
27	BURNS & MCDONNELL	196.4
28	NV5 GLOBAL INC.	186.5
29	VHB	180.3
30	DEWBERRY	176.4
31	ALFRED BENESCH & CO.	171.6
32	VOLKERT INC.	170.4
33	KCI TECHNOLOGIES INC.	160.2
34	TETRA TECH INC.	159.0
35	H.W. LOCHNER INC.	151.7
36	TERRACON CONSULTANTS INC.	148.5
37	MEAD & HUNT INC.	131.3
38	HARDESTY & HANOVER LLC	124.8
39	TRC COS. INC.	124.0
40	GENSLER	119.2
41	GARVER	114.3
42	ARCADIS NORTH AMERICA/CALLISON RTKL	107.2
43	DAVID EVANS ENTERPRISES INC.	104.4
44	WHITMAN REQUARDT AND ASSOCIATES LLP	100.5
45	BEAM LONGEST & NEFF	94.0
46	GHD INC.	91.1
47	CHA CONSULTING INC. (CHA)	86.5
48	PARAMETRIX	85.9
49	COWI NORTH AMERICA	83.7
50	AMERICAN STRUCTUREPOINT	82.8

## BRIDGES

RANK	FIRM	REVENUE (\$ MIL.)
1	JACOBS	276.4
2	AECOM	253.3
3	HDR	227.9
4	HNTB COS.	183.5
5	MICHAEL BAKER INTERNATIONAL	160.0
6	T.Y. LIN INTERNATIONAL	132.8
7	HARDESTY & HANOVER LLC	124.8
8	WSP USA	121.0
9	TRANSYSTEMS	120.0
10	GREENMAN-PEDERSEN INC. (GPI)	104.6
11	KCI TECHNOLOGIES INC.	88.7
12	STANTEC INC.	67.2
13	PARSONS CORP.	63.6
14	COWI NORTH AMERICA	62.3
15	STV GROUP INC.	58.0
16	RK&K	56.6
17	ALFRED BENESCH & CO.	54.9
18	MODJESKI AND MASTERS INC.	46.3
19	EXP	46.1
20	DEWBERRY	38.2
21	VOLKERT INC.	36.9
22	H.W. LOCHNER INC.	32.3
23	GANNETT FLEMING	29.5
24	JOHNSON MIRMIRAN & THOMPSON INC. (JMT)	28.7
25	CHA CONSULTING INC. (CHA)	28.1

## MASS TRANSIT AND RAIL

RANK	FIRM	REVENUE (\$ MIL.)
1	JACOBS	1,083.6
2	AECOM	971.1
3	WSP USA	445.9
4	HNTB COS.	419.2
5	PARSONS CORP.	352.9
6	STV GROUP INC.	268.2
7	HDR	234.6
8	GANNETT FLEMING	198.0
9	MOTT MACDONALD	187.8
10	KIEWIT CORP.	160.5
11	T.Y. LIN INTERNATIONAL	123.0
12	KIMLEY-HORN	111.0
13	STANTEC INC.	110.0
14	ARUP	90.1
15	SNC-LAVALIN INC.	68.8
16	CDM SMITH	63.7
17	SYSTRA USA	51.7
18	ALFRED BENESCH & CO.	46.3
19	EXP	40.1
20	WOOD	34.7
21	RK&K	33.9
22	BURNS ENGINEERING INC.	32.0
23	TRANSYSTEMS	31.2
24	MICHAEL BAKER INTERNATIONAL	30.9
25	HANSON PROFESSIONAL SERVICES INC.	19.4

\*BASED ON 2021 DESIGN REVENUE FROM TRANSPORTATION AS REPORTED IN ENR'S SURVEY OF LEADING CONTRACTORS AND DESIGN FIRMS. SEE ENR.COM FOR EXPANDED LISTINGS.



## HIGHWAYS

RANK	FIRM	REVENUE (\$ MIL.)
1	AECOM	1,587.3
2	JACOBS	1,014.8
3	HNTB COS.	695.1
4	WSP USA	541.6
5	HDR	526.4
6	PARSONS CORP.	449.8
7	KIMLEY-HORN	312.9
8	SNC-LAVALIN INC.	298.5
9	JOHNSON MIRMIRAN & THOMPSON INC. (JMT)	268.7
10	STANTEC INC.	231.0
11	RS&H INC.	217.8
12	T.Y. LIN INTERNATIONAL	183.0
13	WOOD	166.7
14	EXP	159.6
15	GANNETT FLEMING	158.0
16	MICHAEL BAKER INTERNATIONAL	141.9
17	CDM SMITH	135.1
18	VOLKERT INC.	131.6
19	DEWBERRY	126.4
20	RK&K	124.4
21	STV GROUP INC.	118.7
22	H.W. LOCHNER INC.	106.2
23	TRANSYSTEMS	105.0
24	ARCADIS NORTH AMERICA/CALLISON RTKL	101.4
25	TERRACON CONSULTANTS INC.	95.5

## MARINE AND PORT FACILITIES

RANK	FIRM	REVENUE (\$ MIL.)
1	MOFFATT & NICHOL	200.6
2	JACOBS	178.3
3	AECOM	121.2
4	TETRA TECH INC.	55.0
5	HDR	51.8
6	S&B ENGINEERS AND CONSTRUCTORS LTD.	40.7
7	WSP USA	38.1
8	LANIER & ASSOCIATES CONSULTING ENGINEERS INC.	28.4
9	BURNS & MCDONNELL	20.1
10	STANTEC INC.	18.0
11	MCLAREN ENGINEERING GROUP	16.1
12	COWI NORTH AMERICA	15.1
13	MOTT MACDONALD	14.6
14	KIEWIT CORP.	13.1
15	RK&K	11.3

## AIRPORTS

RANK	FIRM	REVENUE (\$ MIL.)
1	AECOM	346.1
2	JACOBS	344.2
3	HNTB COS.	136.2
4	BURNS & MCDONNELL	116.7
5	GENSLER	115.7
6	ARUP	104.0
7	WSP USA	96.8
8	KIMLEY-HORN	93.2
9	RS&H INC.	88.1
10	MEAD & HUNT INC.	76.5
11	PGAL	60.1
12	CORGAN	54.3
13	HDR	52.4
14	GARVER	49.3
15	SNC-LAVALIN INC.	48.5
16	WOOLPERT INC.	44.7
17	MICHAEL BAKER INTERNATIONAL	41.9
18	ZGF ARCHITECTS	40.4
19	LANDRUM & BROWN INC.	39.0
20	STANTEC INC.	35.8
21	PARSONS CORP.	27.2
22	CRAWFORD MURPHY & TILLY INC.	26.1
23	ALLIANCE	23.1
24	GRESHAM SMITH	22.9
25	BURNS ENGINEERING INC.	22.8

**ConocoPhillips**

**V2 for \$6B Alaska Willow Project**

The U.S. Bureau of Land Management on July 8 released a new draft environmental analysis for ConocoPhillips' \$6-billion Willow oil and gas project in the National Petroleum Reserve on Alaska's North Slope, nearly one year after a U.S. district court judge threw out two Trump-era permits for its first phase and ordered a new review to include more study of climate change and wildlife impacts. The oil firm has proposed building up to five drill sites, 37 miles of gravel roads, seven bridges, 315 miles of pipelines and other infrastructure. Proposed project options now include reducing drill sites, or rejecting Willow totally. The Biden administration has supported the project, in an area that holds about 600 million barrels of oil, to boost U.S. domestic supply. S&P Global last year said the Trans-Alaska Pipeline System was at less than 25% of original capacity. Court documents also said ConocoPhillips has invested about \$500 million in Willow. But opponents, who sued to overturn the permits, said it would produce 500 million metric tons of CO<sub>2</sub> if it operated. BLM will seek public comment until Aug. 29 on the new project analysis before releasing a final version possibly later this year.

**Wood**

**Cameron LNG Pushes Expansion**

Cameron LNG awarded to engineering firm John Wood Group PLC on June 30 the owner's engineering services contract for a fourth train at its production and export facility in Hackberry, La., on the Calcasieu ship channel. Wood also will provide services to boost production from the existing three trains that now provide 12 million tons per year, the Cameron announcement said. Design of the fourth train, with planned capacity of 6.75 million tons per year, was amended to include use of electric drives that would cut emissions and provide the option of carbon sequestration. The Federal Energy Regulatory Commission said in April it is evaluating project environmental effects. Semptra Infrastructure, Mitsui & Co., Mitsubishi Corp., TotalEnergies and NYK Line are the owners of Cameron LNG. They did not disclose the expansion project cost but said final investment decision was expected in the second half of 2023, when project development work is set to finish.



**PUMPED** TC Energy seeks a \$335-million upgrade of its Gas Transmission Northwest pipeline from Idaho to Oregon.

## Pipeline Capacity Boosts

### Three U.S. gas lines plan existing infrastructure upgrades

**P**ipeline owners are meeting growing demand for natural gas by expanding capacity on existing infrastructure. The Federal Energy Regulatory Commission issued on June 30 a draft environmental review of a proposed capacity expansion of TC Energy's Gas Transmission Northwest pipeline between Idaho and Oregon (pictured) that found minor, temporary and localized effects. The \$335-million project would increase capacity by about 150 million cu ft/day on the 1,377-mile pipeline by increasing compression, replacing turbines and other upgrades, enabling transport of more Canadian natural gas to the Pacific Northwest in late 2023. FERC in April also approved a capacity expansion on TC Energy's 86-mile North Baja Express that includes upgrades to one compressor station and two meter stations in Arizona and California. Set to boost capacity by 0.5 billion cu ft/day, the project would be complete in 2023. Whitewater Midstream announced in May a capacity boost for the 450-mile Whistler Pipeline in the Permian Basin in Texas by adding three new compressor stations. They will increase its mainline capacity to about 2.5 billion cu ft/day. Delayed during the pandemic, the expansion is set to be in service in September 2023. It received a \$325-million construction investment from Global Infrastructure Fund in 2020. ■

*By Mary B. Powers*

**60%**

**Proportion of 82 surveyed North American oil and gas producers that boosted their capital spending in Q1 2022**

—Evaluate Energy July 2022 economic report

**11.6 MILLION**

**Barrels of U.S. crude oil produced per day in April, compared to record high 12.3 million bpd in 2019. Monthly gross natural gas production in the lower 48 states rose to 107.3 billion cu ft/day in April, its highest since December 2021**

—U.S. Energy Administration July 8 report

# The Top Design Firms in Petroleum

## PETROLEUM

RANK	FIRM	REVENUE (\$ MIL.)
1	FLUOR	2,201.0
2	WORLEY	917.2
3	WOOD	891.0
4	KIEWIT CORP.	334.8
5	INTERTEK-PSI	252.7
6	S&B ENGINEERS AND CONSTRUCTORS LTD.	248.6
7	BURNS & MCDONNELL	231.9
8	BECHTEL	130.0
9	TRC COS. INC.	97.1
10	STANTEC INC.	85.2
11	KLEINFELDER	79.5
12	BLACK & VEATCH	73.6
13	MOTT MACDONALD	73.1
14	ANVIL CORP.	60.9
15	FUGRO INC.	60.7
16	TETRA TECH INC.	56.0
17	BURROW GLOBAL LLC	55.4
18	HARGROVE ENGINEERS + CONSTRUCTORS	49.5
19	WSP USA	47.2
20	SPEC SERVICES INC.	45.6
21	EN ENGINEERING LLC	42.3
22	AECOM	37.9
23	CARDNO INC.	37.8
24	CIVIL & ENVIRONMENTAL CONSULTANTS INC.	37.2
25	SAM LLC	36.8
26	PRIMORIS	35.7
27	POND	34.7
28	HUNT GUILLOT & ASSOCIATES L.L.C.	33.3
29	HDR	31.0
30	BRAUN INTERTEC CORP.	29.9
31	TERRACON CONSULTANTS INC.	28.2
32	ZACHRY GROUP	28.2
33	COLLIERS ENGINEERING & DESIGN	27.4
34	CDI ENGINEERING SOLUTIONS	26.0
35	MIDDOUGH INC.	25.3
36	WALDEMAR S. NELSON AND CO. INC.	24.8
37	SWCA ENVIRONMENTAL CONSULTANTS	23.8
38	WSB	22.9
39	ATWELL LLC	22.7
40	C&I ENGINEERING	21.6
41	BARR ENGINEERING CO.	21.2
42	COFFMAN ENGINEERS INC.	18.1
43	HALFF ASSOCIATES INC.	17.8
44	CDG INC.	17.5
45	BOWMAN CONSULTING GROUP	16.8
46	EA ENGINEERING SCIENCE AND TECH. INC.	16.2
47	RETTEW ASSOCIATES INC.	15.9
48	EXP	15.4
49	WADE TRIM	14.6
50	ORBITAL ENGINEERING INC.	13.5

## PIPELINES

RANK	FIRM	REVENUE (\$ MIL.)
1	INTERTEK-PSI	185.8
2	WOOD	142.5
3	TRC COS. INC.	87.3
4	MOTT MACDONALD	73.1
5	STANTEC INC.	60.3
6	BURNS & MCDONNELL	56.4
7	TETRA TECH INC.	49.0
8	SPEC SERVICES INC.	39.7
9	EN ENGINEERING LLC	39.2
10	POND	34.7
11	WSP USA	33.7
12	HUNT GUILLOT & ASSOCIATES L.L.C.	33.3
13	HDR	29.8
14	CIVIL & ENVIRONMENTAL CONSULTANTS INC.	28.2
15	SAM LLC	25.5
16	KIEWIT CORP.	24.1
17	BOWMAN CONSULTING GROUP	16.8
18	BARR ENGINEERING CO.	14.9
19	WADE TRIM	14.6
20	PARSONS CORP.	13.2
21	SNC-LAVALIN INC.	13.1
22	TERRACON CONSULTANTS INC.	12.2
23	EXP	12.1
24	CHA CONSULTING INC. (CHA)	11.9
25	HALFF ASSOCIATES INC.	11.8

## MAINTENANCE, INCLUDING TURNAROUNDS

RANK	FIRM	REVENUE (\$ MIL.)
1	AECOM	26.4
2	CDG INC.	17.5
3	STANTEC INC.	10.5
4	INTERTEK-PSI	4.3
5	PROFESSIONAL ENGINEERING CONSULTANTS P.A.	2.2

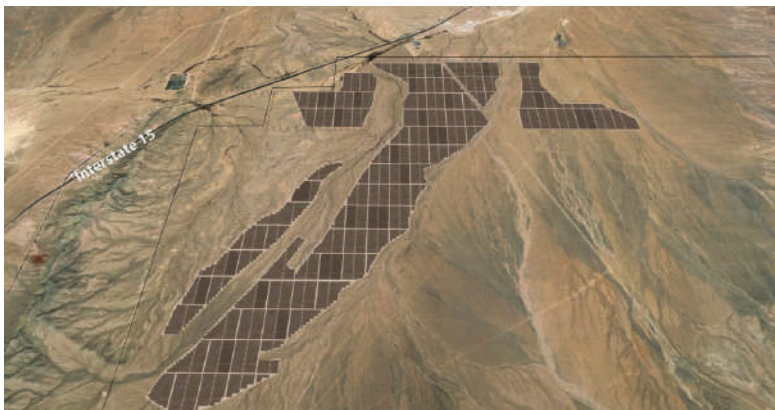
\*BASED ON 2021 DESIGN REVENUE FROM OIL AND GAS AS REPORTED IN ENR'S SURVEY OF LEADING CONTRACTORS AND DESIGN FIRMS. SEE ENR.COM FOR EXPANDED LISTINGS.

## REFINERIES AND PETROCHEMICAL PLANTS

RANK	FIRM	REVENUE (\$ MIL.)
1	FLUOR	2,007.7
2	WOOD	459.3
3	KIEWIT CORP.	310.6
4	S&B ENGINEERS AND CONSTRUCTORS LTD.	241.5
5	BURNS & MCDONNELL	175.5
6	BECHTEL	128.4
7	HARGROVE ENGINEERS + CONSTRUCTORS	48.2
8	BLACK & VEATCH	44.5
9	ZACHRY GROUP	28.2
10	STANTEC INC.	13.6
11	WSP USA	13.5
12	AECOM	8.6
13	BARRY-WEHMILLER DESIGN GROUP	7.5
14	TETRA TECH INC.	7.0
15	BARR ENGINEERING CO.	6.4
16	HALFF ASSOCIATES INC.	6.0
17	WALDEMAR S. NELSON AND CO. INC.	3.5
18	EXP	3.4
19	SPEC SERVICES INC.	3.1
20	EN ENGINEERING LLC	3.0
21	TERRACON CONSULTANTS INC.	3.0
22	GEI CONSULTANTS INC.	2.5
23	TRC COS. INC.	2.2
24	CIVIL & ENVIRONMENTAL CONSULTANTS INC.	1.9
25	DLZ CORP.	1.3

## OFFSHORE AND UNDERWATER FACILITIES

RANK	FIRM	REVENUE (\$ MIL.)
1	FLUOR	187.8
2	WOOD	135.6
3	WALDEMAR S. NELSON AND CO. INC.	18.3
4	DRAGADOS	16.5
5	BLACK & VEATCH	13.9
6	GEOSYNTEC CONSULTANTS	3.0
7	THORNTON TOMASETTI	3.0
8	AECOM	1.2
9	ARUP	1.0
10	GZA	0.9



**HOT SPOT**  
 Project would be built on a 6,500-acre federal site northeast of Las Vegas and include 1.8 million solar modules.

**Burns & McDonnell  
 NJ Offshore Wind Job Moves**

Public comment extends from June 24 to Aug. 8 on the U.S. Interior Dept. draft environmental impact statement for Ocean Wind I, a 1.1-GW New Jersey offshore wind energy project being developed by Danish developer Ørsted with utility PSEG. It involves construction of up to 98 GE Haliade-X wind turbines and three offshore substations with export cables taking power to a closed onshore coal-fired power plant and a decommissioned nuclear facility. Burns & McDonnell Engineering Co. and JINGOLI Power were contracted to install the substations and about 9 miles of underground cable. Construction is expected to start in September 2023. In Rhode Island, Gov. Dan McKee signed a law July 6 requiring competitive procurement of between 600 and 1,000 MW of offshore wind capacity as part of its goal to completely offset electricity generation with renewables by 2033. Rhode Island Energy must issue the procurement by Oct. 15.

**POWER Engineers  
 Landfill Waste to Hydrogen Hub**

Work is set to finish later this year on a test hub to turn landfill-bound waste into hydrogen fuel to power heavy-duty vehicles. Renewable fuel firm Raven SR contracted POWER Engineers last year to complete detailed engineering for the hub at waste owner Republic Services' Richmond, Calif., landfill with Stellar J as contractor. When operating, the hub and another in the state will each produce up to 10 tons daily of renewable hydrogen, enough to fuel 200 heavy-duty trucks. The process does not produce toxic pollutants or particulates, according to POWER Engineers.

# Kiewit Wins Big Solar Job

## \$1.2B Nevada design-build project includes battery storage

**K**iewit Power will engineer and build the \$1.2-billion, 690-MW Gemini solar array in Nevada, with Chicago-based IHI Terrasun Solutions as the integrator for the accompanying 1,416-MWh battery storage plant, Primergy Solar, its Oakland, Calif., developer, owner and operator announced recently. It is a unit of Australia-based Quinbrook Infrastructure Partners.

The project will have more than 1.8 million solar modules installed on about 6,500 acres of federal land northeast of Las Vegas, and would produce enough energy to power the city, said Primergy. Maxeon Solar Technologies of Singapore will provide high-efficiency, bifacial solar modules, the developer said. The firm and its parent said July 1 that they closed a \$1.9-billion debt and tax equity financing for the project, including \$1.3 billion in credit facilities for a construction loan and tax equity commitments. Gemini “is extraordinary in its scope and scale, and we are excited to join Primergy in significantly expanding the availability of clean energy,” said Dave Flickinger, executive vice president of Kiewit Energy Group. Primergy said it will implement construction methods such as alternative site preparation, narrow road corridors into the project site and spaced and raised rows of solar modules to ensure that nearly 80% of the land “remains open to the sky.” Construction, set to have a 1,000-person workforce, will finish in 2023, said the developer. Opponents remain concerned about project disruption to the desert ecosystem, but Primergy has noted major risk reduction investments such as tortoise relocation. ■

*By Mary B. Powers*

**32%**

**Drop in June power capacity auction price for supply starting on June 1, 2023, with more clean energy source competition in 13-state region.**

-PJM Interconnection

**HDR**

**Washington State Pumped Storage Project Seeks Construction Plan Comment by Aug. 9**



Washington state has extended until Aug. 9 the public comment deadline on its environmental review of a plan to build a \$2.1-billion, 1.2-GW pumped storage project, set to be the largest in the Northwest. HDR Engineering prepared initial design for the Goldendale energy storage site, with Copenhagen Infrastructure Partners and Rye Development as its major investors. The project consists of two reservoirs at different elevations linked by a tunnel with reversible turbines. It would draw Columbia River water, store it on an upper reservoir and release it to a lower one to generate power when other renewable sources are not available. Construction would start in 2025 and finish in 2028.

# The Top Design Firms in Power

## NUCLEAR PLANTS

RANK	FIRM	REVENUE (\$ MIL.)
1	SARGENT & LUNDY	221.0
2	JACOBS	190.0
3	ENERCON	142.8
4	WOOD	61.2
5	UNITED ENGINEERS & CONSTRUCTORS INC.	32.0
6	FLUOR	30.4
7	TETRA TECH INC.	26.0
8	ZACHRY GROUP	23.9
9	BECHTEL	19.9
10	AECOM	12.0
11	GREENMAN-PEDERSEN INC. (GPI)	9.9
12	BLACK & VEATCH	8.8
13	BURNS & MCDONNELL	8.1
14	SNC-LAVALIN INC.	5.9
15	GEOSYNTEC CONSULTANTS	1.2

## TRANSMISSION AND DISTRIBUTION

RANK	FIRM	REVENUE (\$ MIL.)
1	BURNS & MCDONNELL	595.1
2	POWER ENGINEERS INC.	498.8
3	TRC COS. INC.	416.8
4	LEIDOS	258.5
5	BLACK & VEATCH	256.7
6	EN ENGINEERING LLC	241.0
7	WSP USA	216.9
8	SARGENT & LUNDY	180.3
9	AECOM	159.2
10	JACOBS	125.4
11	HDR	108.7
12	ULTEIG ENGINEERS INC.	85.2
13	SAM LLC	74.3
14	TETRA TECH INC.	65.0
15	TERRACON CONSULTANTS INC.	47.6
16	STANTEC INC.	46.0
17	KCI TECHNOLOGIES INC.	39.4
18	WOOD	39.2
19	ENERCON	38.3
20	CHA CONSULTING INC. (CHA)	33.1
21	STANLEY CONSULTANTS	30.2
22	SNC-LAVALIN INC.	29.5
23	VOLKERT INC.	28.4
24	KIEWIT CORP.	28.1
25	OLSSON INC.	25.2

## POWER

RANK	FIRM	REVENUE (\$ MIL.)
1	BURNS & MCDONNELL	856.3
2	BLACK & VEATCH	604.1
3	POWER ENGINEERS INC.	537.2
4	JACOBS	528.0
5	SARGENT & LUNDY	525.8
6	TRC COS. INC.	504.4
7	KIEWIT CORP.	347.0
8	AECOM	309.7
9	WSP USA	294.6
10	LEIDOS	293.6
11	TETRA TECH INC.	260.0
12	NV5 GLOBAL INC.	252.2
13	EN ENGINEERING LLC	241.0
14	HDR	233.4
15	WOOD	195.3
16	STANTEC INC.	192.2
17	ENERCON	190.9
18	FUGRO INC.	134.8
19	ULTEIG ENGINEERS INC.	129.2
20	MESA ASSOCIATES INC.	129.0
21	WILLDAN	113.3
22	ATWELL LLC	113.0
23	ELECTRICAL CONSULTANTS INC.	112.4
24	TERRACON CONSULTANTS INC.	107.6
25	WORLEY	106.5
26	WESTWOOD PROFESSIONAL SERVICES	99.7
27	UNITED ENGINEERS & CONSTRUCTORS INC.	91.6
28	SWCA ENVIRONMENTAL CONSULTANTS	77.1
29	KIMLEY-HORN	74.9
30	SAM LLC	74.3
31	GAI CONSULTANTS INC.	64.9
32	SNC-LAVALIN INC.	59.8
33	NORTHEAST-WESTERN ENERGY SYSTEMS	59.7
34	GEOSYNTEC CONSULTANTS	49.8
35	STANLEY CONSULTANTS	45.0
36	LANGAN	43.4
37	CHA CONSULTING INC. (CHA)	42.0
38	PRIMORIS	41.2
39	KCI TECHNOLOGIES INC.	40.8
40	FLUOR	40.5
41	RRC POWER & ENERGY LLC	39.4
42	HBK ENGINEERING LLC	38.0
43	KLEINFELDER	37.6
44	MOTT MACDONALD	36.9
45	M&S ENGINEERING LLC	36.9
46	ZACHRY GROUP	36.9
47	CARDNO INC.	36.0
48	BARR ENGINEERING CO.	35.9
49	BECHTEL	32.0
50	RCM TECHNOLOGIES INC.	30.7

\*BASED ON 2021 DESIGN REVENUE FROM POWER AS REPORTED IN ENR'S SURVEY OF LEADING CONTRACTORS AND DESIGN FIRMS. SEE ENR.COM FOR EXPANDED LISTINGS.

## CO-GENERATION

RANK	FIRM	REVENUE (\$ MIL.)
1	NORTHEAST-WESTERN ENERGY SYSTEMS	59.7
2	JACOBS	28.1
3	WSP USA	10.4
4	ENERCON	9.8
5	STANTEC INC.	6.1
6	VANDERWEIL ENGINEERS	5.9
7	CHA CONSULTING INC. (CHA)	5.5
8	LEIDOS	3.0
9	BURNS & MCDONNELL	3.0
10	WOOD	2.8

## HYDRO PLANTS

RANK	FIRM	REVENUE (\$ MIL.)
1	TETRA TECH INC.	87.0
2	HDR	68.6
3	STANTEC INC.	60.5
4	BLACK & VEATCH	27.1
5	KIEWIT CORP.	20.1
6	GEI CONSULTANTS INC.	11.2
7	DLZ CORP.	10.8
8	WSP USA	7.7
9	WOOD	6.8
10	JACOBS	5.6

## OPERATION AND MAINTENANCE

RANK	FIRM	REVENUE (\$ MIL.)
1	JACOBS	67.2
2	AECOM	21.3
3	KIMLEY-HORN	14.3
4	PATRICK ENGINEERING INC.	13.8
5	PRIMERA ENGINEERS LTD.	10.0

## WIND POWER

RANK	FIRM	REVENUE (\$ MIL.)
1	JACOBS	52.6
2	TETRA TECH INC.	52.0
3	AECOM	33.4
4	BURNS & MCDONNELL	31.4
5	SARGENT & LUNDY	27.5
6	STANTEC INC.	27.0
7	RRC POWER & ENERGY LLC	18.4
8	ELECTRICAL CONSULTANTS INC.	16.7
9	ULTEIG ENGINEERS INC.	15.2
10	BARR ENGINEERING CO.	15.1

## FOSSIL FUEL

RANK	FIRM	REVENUE (\$ MIL.)
1	KIEWIT CORP.	247.0
2	BLACK & VEATCH	216.1
3	BURNS & MCDONNELL	170.0
4	SARGENT & LUNDY	86.2
5	WOOD	74.0
6	AECOM	55.2
7	WSP USA	46.9
8	GEOSYNTEC CONSULTANTS	40.9
9	UNITED ENGINEERS & CONSTRUCTORS INC.	37.4
10	HDR	36.9
11	POWER ENGINEERS INC.	28.7
12	STANTEC INC.	25.5
13	SNC-LAVALIN INC.	17.4
14	ZACHRY GROUP	12.9
15	JACOBS	12.4
16	HARGROVE ENGINEERS + CONSTRUCTORS	11.8
17	WOOLPERT INC.	9.9
18	STANLEY CONSULTANTS	9.6
19	BARR ENGINEERING CO.	8.8
20	INTERTEK-PSI	8.0
21	GZA	7.9
22	CIVIL & ENVIRONMENTAL CONSULTANTS INC.	6.2
23	BECHTEL	6.2
24	LEIDOS	5.0
25	S&B ENGINEERS AND CONSTRUCTORS LTD.	3.5

## SOLAR POWER

RANK	FIRM	REVENUE (\$ MIL.)
1	ELECTRICAL CONSULTANTS INC.	87.0
2	BLACK & VEATCH	69.6
3	KIMLEY-HORN	60.6
4	TERRACON CONSULTANTS INC.	49.0
5	JACOBS	46.7
6	BURNS & MCDONNELL	44.0
7	KIEWIT CORP.	43.3
8	TETRA TECH INC.	30.0
9	TRC COS. INC.	25.4
10	AECOM	24.6

**Burns & McDonnell**

**New Water Supply in Illinois**

Burns & McDonnell is nearing completion of a drinking water supply project for the Village of Homewood, Ill. The \$12-million progressive design-build project, which includes an 11 million-gallon-per-day booster pump station and approximately 2.5 miles of 30-in.-dia transmission pipes, is expected to complete in August and is being financed entirely by the village's rate plans. Homewood embarked on the project to be able to access a new, less costly drinking water supply.

**Stantec**

**Firm to Manage Multiyear Program**

Stantec has been selected as program management consultant for the Iona Island Wastewater Treatment Plant projects in Vancouver, British Columbia. The estimated \$7.6-billion multi-year program includes construction of a new tertiary treatment facility and a range of ecological restoration and off-site works projects. The project is the largest ever undertaken by Metro Vancouver, a federation of 23 municipalities, one electoral area and one treaty First Nation that collaboratively plans for and delivers regional-scale services. Stantec says the project design will increase the level of treatment to improve both water quality and the surrounding marine environment, and improve resilience to withstand earthquakes and potential sea level rise.

**Investments along Miami's waterfront are "essential" to ensuring the area remains functional, and adaptable to changing conditions, the city of Miami says.**

# Maine Biosolids Revamp

## Brown and Caldwell hired for masterplanning



**UPGRADES** Portland's East End Wastewater Treatment Facility, the largest wastewater treatment plant in Maine, is one of four that will be included in the biosolids masterplanning effort.

**B**rown and Caldwell announced in June that it had been hired to work with the Portland, Maine, Water District to develop a master plan evaluating current and future biosolids management.

Costs associated with biosolids disposal have risen 44% in the past two years, due to rising landfill disposal fees, as well as evolving regulations relating to emerging contaminants such as per- and polyfluoroalkyl substances (PFAS), according to PWD.

"Where we are right now is not sustainable. We will look at creative ways to reduce the volume of biosolids generated and explore available treatment options," says Scott Firmin, PWD's director of wastewater services.

Brown and Caldwell's scope of work on the project includes identifying risks, performing a regulatory review and cost estimates, and providing other engineering analyses to develop a master plan assessing solids processing and disposal alternatives at the district's four wastewater treatment plants. ■

*By Pam McFarland*

**TETRA TECH**

**FIRM EVALUATING OPTIONS FOR MIAMI'S WATERFRONT**



Tetra Tech is working with the City of Miami to evaluate concepts for improving the city's resiliency against sea level rise, storm surges and flooding. The project's components include roadway and drainage improvements, enhancing greenspaces along the waterfront and improving the existing seawall's resiliency. According to the city website, the existing 4-ft, 2-in.-high seawall provides little protection from intense storms and king tide events, which cause Brickell Bay Drive and the Baywalk, only 5 ft from water, to flood routinely. Although still in the developmental stages, the plan for the Brickell Bay Drive waterfront area could include raising or revamping the city's seawall, as well as adding nature-based solutions.



# The Top Design Firms in Environment

## WATER SUPPLY

RANK	FIRM	REVENUE (\$ MIL.)
1	TETRA TECH INC.	1,375.0
2	JACOBS	1,067.0
3	AECOM	1,058.5
4	CDM SMITH	256.0
5	HDR	254.9
6	STANTEC INC.	231.7
7	ARCADIS NORTH AMERICA/CALLISON RTKL	173.6
8	BLACK & VEATCH	142.4
9	CAROLLO ENGINEERS INC.	134.2
10	HAZEN AND SAWYER	113.6
11	GHD INC.	104.6
12	MICHAEL BAKER INTERNATIONAL	99.4
13	GANNETT FLEMING	89.3
14	BROWN AND CALDWELL	85.5
15	WOOD	81.4
16	MOTT MACDONALD	80.9
17	NV5 GLOBAL INC.	74.7
18	FREESE AND NICHOLS INC.	72.3
19	BURNS & MCDONNELL	70.8
20	DEWBERRY	61.3
21	GEI CONSULTANTS INC.	61.1
22	WOODARD & CURRAN	58.6
23	ARDURRA GROUP INC.	58.5
24	SNC-LAVALIN INC.	56.3
25	CONSOR ENGINEERS	47.1
26	SCHNABEL ENGINEERING	45.6
27	PARSONS CORP.	43.7
28	KLEINFELDER	40.3
29	KIMLEY-HORN	38.5
30	GEOSYNTEC CONSULTANTS	37.2
31	KIEWIT CORP.	36.8
32	DCCM	36.0
33	KENNEDY/JENKS CONSULTANTS INC.	35.1
34	WESTON & SAMPSON	34.5
35	BARR ENGINEERING CO.	32.4
36	EXP	28.5
37	RAMBOLL	28.3
38	GARVER	26.3
39	HALFF ASSOCIATES INC.	25.0
40	WSP USA	24.9
41	H2M ARCHITECTS + ENGINEERS	23.6
42	TERRACON CONSULTANTS INC.	23.3
43	BAXTER & WOODMAN INC.	21.7
44	STANLEY CONSULTANTS	21.7
45	HNTB COS.	21.3
46	TIGHE & BOND INC.	21.0
47	WOOD RODGERS INC.	19.8
48	STV GROUP INC.	19.1
49	FUGRO INC.	18.8
50	LABELLA ASSOCIATES DPC	18.6

## SEWER AND WASTE

RANK	FIRM	REVENUE (\$ MIL.)
1	JACOBS	766.9
2	TETRA TECH INC.	385.0
3	AECOM	374.1
4	BROWN AND CALDWELL	283.3
5	SCS ENGINEERS	281.6
6	HDR	270.4
7	HAZEN AND SAWYER	230.6
8	CDM SMITH	223.9
9	CAROLLO ENGINEERS INC.	206.3
10	STANTEC INC.	174.5
11	BLACK & VEATCH	163.0
12	WOODARD & CURRAN	131.6
13	GHD INC.	103.1
14	GEOSYNTEC CONSULTANTS	91.7
15	ARCADIS NORTH AMERICA/CALLISON RTKL	76.0
16	GREELEY AND HANSEN	73.5
17	KIMLEY-HORN	71.5
18	FREESE AND NICHOLS INC.	70.0
19	WOOD	64.9
20	BURNS & MCDONNELL	58.9
21	ARDURRA GROUP INC.	55.9
22	GANNETT FLEMING	52.6
23	MOTT MACDONALD	48.6
24	WESTON & SAMPSON	48.5
25	WADE TRIM	47.4
26	GARVER	41.3
27	WRIGHT-PIERCE	39.4
28	RAMBOLL	39.1
29	LABELLA ASSOCIATES DPC	36.5
30	STRAND ASSOCIATES INC.	36.4
31	CIVIL & ENVIRONMENTAL CONSULTANTS INC.	36.3
32	DEWBERRY	36.3
33	RJN GROUP INC.	34.4
34	KLEINFELDER	33.6
35	KCI TECHNOLOGIES INC.	30.6
36	BGE INC.	30.0
37	GRESHAM SMITH	28.3
38	NV5 GLOBAL INC.	27.2
39	EA ENGINEERING SCIENCE AND TECH. INC.	26.2
40	DONOHUE & ASSOCIATES INC.	25.2
41	KENNEDY/JENKS CONSULTANTS INC.	25.0
42	DCCM	24.0
43	WSP USA	23.8
44	BAXTER & WOODMAN INC.	23.7
45	BURGESS & NIPLE INC.	22.8
46	LOCKWOOD ANDREWS & NEWNAM INC.	22.5
47	HALFF ASSOCIATES INC.	22.5
48	BARTON & LOGUIDICE D.P.C.	22.2
49	J-U-B ENGINEERS INC.	22.0
50	QUIDDITY ENGINEERING	22.0

\*BASED ON 2021 DESIGN REVENUE FROM ENVIRONMENT AS REPORTED IN ENR'S SURVEY OF LEADING CONTRACTORS AND DESIGN FIRMS. SEE ENR.COM FOR EXPANDED LISTINGS.

## HAZARDOUS WASTE

RANK	FIRM	REVENUE (\$ MIL.)
1	JACOBS	2,116.6
2	AECOM	1,048.4
3	FLUOR	826.9
4	ARCADIS NORTH AMERICA/CALLISON RTKL	731.4
5	TETRA TECH INC.	700.5
6	LEIDOS	620.0
7	BECHTEL	297.0
8	TRC COS. INC.	276.8
9	WOOD	250.8
10	GHD INC.	242.1
11	GEOSYNTEC CONSULTANTS	239.9
12	RAMBOLL	225.6
13	PARSONS CORP.	176.4
14	SNC-LAVALIN INC.	176.2
15	WSP USA	171.3
16	TERRACON CONSULTANTS INC.	165.0
17	BURNS & MCDONNELL	116.8
18	CDM SMITH	111.8
19	LANGAN	108.4
20	HALEY & ALDRICH INC.	106.1
21	BROWN AND CALDWELL	84.8
22	EA ENGINEERING SCIENCE AND TECH. INC.	64.5
23	WOODARD & CURRAN	57.9
24	GEI CONSULTANTS INC.	57.4
25	VERDANTAS	52.7
26	SCS ENGINEERS	50.1
27	AMENTUM	36.0
28	ENSAFE INC.	34.8
29	LABELLA ASSOCIATES DPC	33.8
30	BARR ENGINEERING CO.	33.4
31	CIVIL & ENVIRONMENTAL CONSULTANTS INC.	32.6
32	STANTEC INC.	32.5
33	SARGENT & LUNDY	32.3
34	LJA ENGINEERING	17.3
35	NV5 GLOBAL INC.	16.9
36	VHB	15.9
37	GEOENGINEERS INC.	15.3
38	HDR	15.2
39	AKRF INC.	15.0
40	GZA	14.6
41	SANBORN HEAD & ASSOCIATES INC.	13.8
42	TIGHE & BOND INC.	12.9
43	WESTON & SAMPSON	12.5
44	MICHAEL BAKER INTERNATIONAL	11.1
45	EXP	10.9
46	PBS ENGINEERING AND ENVIRONMENTAL INC.	10.8
47	FOTH	9.8
48	JENSEN HUGHES	9.5
49	ENERCON	9.4
50	H2M ARCHITECTS + ENGINEERS	8.9

## WATER TREATMENT, DESALINATION PLANTS

RANK	FIRM	REVENUE (\$ MIL.)
1	TETRA TECH INC.	809.0
2	JACOBS	557.9
3	AECOM	292.3
4	CDM SMITH	180.8
5	ARCADIS NORTH AMERICA/CALLISON RTKL	126.8
6	CAROLLO ENGINEERS INC.	99.0
7	HDR	83.9
8	STANTEC INC.	83.7
9	BLACK & VEATCH	72.3
10	BURNS & MCDONNELL	70.8
11	HAZEN AND SAWYER	69.8
12	WOOD	55.6
13	GANNETT FLEMING	44.5
14	ARDURRA GROUP INC.	43.9
15	KIMLEY-HORN	38.5
16	PARSONS CORP.	37.3
17	BROWN AND CALDWELL	32.4
18	H2M ARCHITECTS + ENGINEERS	23.6
19	KIEWIT CORP.	20.3
20	MOTT MACDONALD	19.7

## TRANSMISSION LINES AND AQUEDUCTS

RANK	FIRM	REVENUE (\$ MIL.)
1	JACOBS	432.0
2	AECOM	387.5
3	TETRA TECH INC.	188.0
4	CDM SMITH	75.2
5	HDR	56.3
6	MOTT MACDONALD	52.5
7	STANTEC INC.	51.3
8	MICHAEL BAKER INTERNATIONAL	45.6
9	BLACK & VEATCH	40.4
10	BROWN AND CALDWELL	35.2
11	CAROLLO ENGINEERS INC.	35.2
12	SNC-LAVALIN INC.	34.6
13	FREESE AND NICHOLS INC.	34.3
14	EXP	21.9
15	HAZEN AND SAWYER	20.7
16	DEWBERRY	19.1
17	STV GROUP INC.	19.1
18	WSP USA	15.3
19	ARDURRA GROUP INC.	14.6
20	DLZ CORP.	13.7

## DAMS AND RESERVOIRS

RANK	FIRM	REVENUE (\$ MIL.)
1	AECOM	378.6
2	TETRA TECH INC.	378.0
3	HDR	114.7
4	STANTEC INC.	96.7
5	JACOBS	77.1
6	MICHAEL BAKER INTERNATIONAL	50.2
7	GEI CONSULTANTS INC.	49.2
8	GANNETT FLEMING	44.9
9	ARCADIS NORTH AMERICA/CALLISON RTKL	35.2
10	BLACK & VEATCH	26.1
11	FREESE AND NICHOLS INC.	26.0
12	HAZEN AND SAWYER	23.8
13	BROWN AND CALDWELL	17.9
14	WOOD	16.7
15	KIEWIT CORP.	16.5

## WASTEWATER TREATMENT PLANTS

RANK	FIRM	REVENUE (\$ MIL.)
1	JACOBS	464.2
2	AECOM	372.0
3	BROWN AND CALDWELL	191.4
4	HDR	160.4
5	CAROLLO ENGINEERS INC.	154.1
6	HAZEN AND SAWYER	152.3
7	CDM SMITH	136.2
8	TETRA TECH INC.	95.0
9	BLACK & VEATCH	92.6
10	STANTEC INC.	78.7
11	BURNS & MCDONNELL	58.9
12	GANNETT FLEMING	51.3
13	ARDURRA GROUP INC.	41.9
14	GREELEY AND HANSEN	37.3
15	GARVER	32.6
16	ARCADIS NORTH AMERICA/CALLISON RTKL	31.0
17	MOTT MACDONALD	26.8
18	FREESE AND NICHOLS INC.	23.4
19	DONOHUE & ASSOCIATES INC.	23.0
20	WSP USA	20.7
21	STRAND ASSOCIATES INC.	18.6
22	WRIGHT-PIERCE	17.4
23	KIMLEY-HORN	16.5
24	WOOD	16.3
25	QUIDDITY ENGINEERING	15.0

## SANITARY AND STORM SEWERS

RANK	FIRM	REVENUE (\$ MIL.)
1	JACOBS	275.7
2	BROWN AND CALDWELL	87.5
3	STANTEC INC.	86.9
4	CDM SMITH	80.5
5	HAZEN AND SAWYER	77.7
6	TETRA TECH INC.	70.0
7	HDR	64.6
8	KIMLEY-HORN	55.0
9	CAROLLO ENGINEERS INC.	52.2
10	BLACK & VEATCH	51.3
11	FREESE AND NICHOLS INC.	46.6
12	ARCADIS NORTH AMERICA/CALLISON RTKL	43.3
13	WADE TRIM	41.7
14	GREELEY AND HANSEN	35.5
15	WOOD	33.3
16	DEWBERRY	31.6
17	KCI TECHNOLOGIES INC.	25.5
18	J-U-B ENGINEERS INC.	22.0
19	MOTT MACDONALD	20.8
20	DLZ CORP.	18.6
21	STRAND ASSOCIATES INC.	17.8
22	WRIGHT-PIERCE	17.3
23	GRESHAM SMITH	14.4
24	ARDURRA GROUP INC.	14.0
25	RK&K	13.6

## CHEMICAL AND SOIL REMEDIATION

RANK	FIRM	REVENUE (\$ MIL.)
1	JACOBS	712.7
2	AECOM	660.3
3	ARCADIS NORTH AMERICA/CALLISON RTKL	523.3
4	TETRA TECH INC.	290.0
5	LEIDOS	265.0
6	BECHTEL	181.7
7	WOOD	167.6
8	GEOSYNTEC CONSULTANTS	147.3
9	TRC COS. INC.	130.9
10	CDM SMITH	111.8
11	PARSONS CORP.	96.3
12	BURNS & MCDONNELL	55.9
13	BROWN AND CALDWELL	49.2
14	GEI CONSULTANTS INC.	47.8
15	TERRACON CONSULTANTS INC.	25.5
16	STANTEC INC.	19.4
17	WSP USA	19.2
18	SCS ENGINEERS	16.6
19	CIVIL & ENVIRONMENTAL CONSULTANTS INC.	9.5
20	ENERCON	9.4

## SOLID WASTE

RANK	FIRM	REVENUE (\$ MIL.)
1	SCS ENGINEERS	280.0
2	TETRA TECH INC.	220.0
3	GEOSYNTEC CONSULTANTS	81.0
4	HDR	45.4
5	CIVIL & ENVIRONMENTAL CONSULTANTS INC.	33.5
6	JACOBS	27.0
7	BLACK & VEATCH	18.6
8	ARM GROUP ENTERPRISES INC.	17.1
9	WOOD	15.4
10	STANTEC INC.	8.9

## SITE ASSESSMENT AND COMPLIANCE

RANK	FIRM	REVENUE (\$ MIL.)
1	JACOBS	568.8
2	TETRA TECH INC.	365.5
3	AECOM	336.1
4	ARCADIS NORTH AMERICA/CALLISON RTKL	170.9
5	WSP USA	118.4
6	LEIDOS	106.4
7	TERRACON CONSULTANTS INC.	96.4
8	TRC COS. INC.	92.2
9	GEOSYNTEC CONSULTANTS	66.7
10	BURNS & MCDONNELL	60.8
11	WOOD	51.9
12	BROWN AND CALDWELL	35.6
13	SCS ENGINEERS	35.1
14	CIVIL & ENVIRONMENTAL CONSULTANTS INC.	14.8
15	BARR ENGINEERING CO.	12.6

## NUCLEAR WASTE

RANK	FIRM	REVENUE (\$ MIL.)
1	FLUOR	826.9
2	JACOBS	765.1
3	LEIDOS	243.8
4	SNC-LAVALIN INC.	176.2
5	AMENTUM	36.0

## ASBESTOS AND LEAD ABATEMENT

RANK	FIRM	REVENUE (\$ MIL.)
1	TERRACON CONSULTANTS INC.	40.0
2	ARCADIS NORTH AMERICA/CALLISON RTKL	20.2
3	TRC COS. INC.	14.2
4	WSP USA	5.3
5	GZA	4.3

## CLEAN AIR COMPLIANCE

RANK	FIRM	REVENUE* (\$ MIL.)
1	JACOBS	70.0
2	PARSONS CORP.	52.6
3	AECOM	52.1
4	TETRA TECH INC.	45.0
5	TRC COS. INC.	39.5
6	WSP USA	28.5
7	BARR ENGINEERING CO.	15.0
8	WOOD	13.5
9	GEOSYNTEC CONSULTANTS	11.4
10	CIVIL & ENVIRONMENTAL CONSULTANTS INC.	8.3

# 2.6%

The average increase in capital spending anticipated over the next 12 months.

—National Association of Manufacturers  
Second Quarter 2022 Outlook Survey

### Fluor Corp.

#### Eli Lilly Pharmaceutical Plants

Fluor is designing Eli Lilly and Co.'s \$2.1-billion pair of manufacturing sites at Indiana Economic Development Corp.'s LEAP Lebanon Innovation and Research District in Boone County. The state has targeted growth for the district, located northwest of Indianapolis where the pharmaceutical firm is based. Company Chairman and CEO David A. Ricks said it is an investor in the district's development. The facility will help meet increased demand for Lilly's Type 2 diabetes treatments by making active ingredients and new products such as genetic medicines. The firm estimates the project will support 1,500 construction jobs, but also says work is contingent on zoning and other approvals.

### SSOE Group

#### Lithium-ion Battery Cell Plant

SSOE Group is providing architecture and engineering services on the design-build team for Idaho-based battery cell technology firm KORE Power Inc.'s \$1.25-billion manufacturing plant in Buckeye, Ariz. The 2-million-sq-ft, 12-GWh-capacity plant known as the KOREplex will be powered by on-site solar at the 214-acre facility. It will produce lithium-ion battery cells for electric vehicles and energy storage. KORE says the facility will be the first of its kind owned by a U.S.-based company and manufacturing U.S.-owned intellectual property.

# 97%

The increase in manufacturing construction starts year-to-date in May.

—Dodge Data & Analytics



**ADVANCED MANUFACTURING** Intel recently finished a \$3-billion expansion of its D1X factory in Oregon, top, while Texas Instruments broke ground on a \$6.5-billion Texas fabrication plant, above.

## Chip Production Boost

Manufacturers move to open more semiconductor plants

Manufacturers have responded to the global semiconductor chip shortage with plans to boost domestic production. The U.S. semiconductor sector saw \$40.5 billion in gross capital expenditures in 2021 as companies worked to meet demand, according to the Semiconductor Industry Association. Taiwan-based GlobalWafers announced plans in June for a \$5-billion wafer production plant in Sherman, Texas. Sherman is also where Texas Instruments recently broke ground on a \$6.5-billion plant, known as a “fab,” which the company says could be the first of four at the site. Other large projects in the works include a \$17-billion Samsung plant planned for Taylor, Texas, and Intel’s \$20-billion, two-fab “mega-site” in New Albany, Ohio. However, some of these high-price projects could face delays as lawmakers have not yet reached a deal on \$52 billion over five years promised by the CHIPS Act to boost U.S. semiconductor manufacturing. Both houses of Congress have passed the act, but lawmakers have not yet reached a deal for the money to be available. In a statement, an Intel spokesperson said the delay in CHIPS Act funding may delay the groundbreaking for its Ohio project. Commerce Secretary Gina Raimondo said during a June 27 CNBC interview that the delay could put GlobalWafers’ Texas plant plan in jeopardy, and she called on lawmakers to reach a deal before their August recess. ■

By James Leggate

# The Top Design Firms in Manufacturing, Telecom

## INDUSTRIAL PROCESS

RANK	FIRM	REVENUE (\$ MIL.)
1	JACOBS	1,269.0
2	FLUOR	418.8
3	WOOD	410.3
4	CRB	280.3
5	HARGROVE ENGINEERS + CONSTRUCTORS	266.7
6	BECHTEL	226.0
7	IPS-INTEGRATED PROJECT SERVICES LLC	214.5
8	FOTH	213.1
9	INTERTEK-PSI	209.0
10	BARRY-WEHMILLER DESIGN GROUP	201.0
11	BURNS & MCDONNELL	111.0
12	DENNIS GROUP	96.8
13	S&B ENGINEERS AND CONSTRUCTORS LTD.	93.8
14	THE YATES COS. INC.	78.9
15	WARE MALCOMB	74.3
16	GENESIS AEC	67.5
17	HASKELL	54.2
18	WUNDERLICH-MALEC ENGINEERING INC.	50.2
19	AECOM	46.5
20	MEAD & HUNT INC.	43.5
21	POWER ENGINEERS INC.	43.4
22	SSOE GROUP	43.1
23	EWINGCOLE	42.0
24	STELLAR	40.7
25	STANTEC INC.	34.3
26	WSP USA	30.0
27	MIDDOUGH INC.	29.8
28	BSI ENGINEERING	29.8
29	ZACHRY GROUP	27.9
30	JENSEN HUGHES	26.4
31	EXP	25.1
32	SNC-LAVALIN INC.	22.6
33	CDI ENGINEERING SOLUTIONS	20.0
34	HIXSON ARCHITECTURE & ENGINEERING	19.5
35	HUNT GUILLOT & ASSOCIATES L.L.C.	17.1
36	SALAS O'BRIEN	17.0
37	POND	16.8
38	KIEWIT CORP.	16.4
39	TERRACON CONSULTANTS INC.	16.2
40	S&ME INC.	16.2
41	SUPERIOR ENGINEERING LLC	15.6
42	TETRA TECH INC.	15.0
43	UNIVERSAL ENGINEERING SCIENCES	14.7
44	EPSTEIN	13.4
45	BRAUN INTERTEC CORP.	13.0
46	COFFMAN ENGINEERS INC.	13.0
47	STANLEY CONSULTANTS	12.7
48	EN ENGINEERING LLC	12.3
49	GBA (GEORGE BUTLER ASSOCIATES)	12.0
50	GHD INC.	11.0

## MANUFACTURING

RANK	FIRM	REVENUE (\$ MIL.)
1	JACOBS	706.7
2	WOOD	139.8
3	INTERTEK-PSI	120.9
4	GHAFFARI ASSOCIATES LLC	92.4
5	SSOE GROUP	84.1
6	MERRICK & CO.	74.5
7	WARE MALCOMB	55.4
8	LEIDOS	53.7
9	BURNS & MCDONNELL	50.9
10	EXYTE AMERICAS HOLDING INC.	43.2
11	WUNDERLICH-MALEC ENGINEERING INC.	40.0
12	TAI ENGINEERING	38.0
13	WSP USA	34.6
14	SNC-LAVALIN INC.	33.9
15	MATRIX TECHNOLOGIES INC.	32.7
16	RAMBOLL	31.0
17	CHA CONSULTING INC. (CHA)	26.2
18	RS&H INC.	25.5
19	GRESHAM SMITH	24.9
20	GZA	23.4
21	TETRA TECH INC.	21.5
22	BSI ENGINEERING	21.4
23	THERMALTECH ENGINEERING INC.	20.7
24	STANTEC INC.	19.4
25	HASKELL	17.6
26	MCKIM & CREED INC.	17.1
27	BRPH COS. INC.	16.9
28	KPFF CONSULTING ENGINEERS	15.5
29	COLLIERS ENGINEERING & DESIGN	15.0
30	SHIVE-HATTERY	14.5
31	VESTAL CORP.	14.3
32	BARGE DESIGN SOLUTIONS	13.7
33	ENGINEERING CONSULTING SERVICES (ECS)	13.1
34	TERRACON CONSULTANTS INC.	13.0
35	FLUOR	12.9
36	ENSAFE INC.	11.3
37	THE BURKE GROUP LTD.	10.0
38	POWERS BROWN ARCHITECTURE	9.8
39	IBI GROUP INC.	9.2
40	TKDA	9.1
41	RSP	8.7
42	BARTON MALOW HOLDINGS LLC	8.6
43	UNIVERSAL ENGINEERING SCIENCES	8.3
44	RMF ENGINEERING INC.	8.0
45	SME	8.0
46	THE MANNIK & SMITH GROUP INC.	8.0
47	NOVA ENGINEERING & ENVIRONMENTAL LLC	7.7
48	AMERICAN STRUCTUREPOINT	7.5
49	FARNSWORTH GROUP INC.	7.4
50	EN ENGINEERING LLC	7.3

\*BASED ON 2021 DESIGN REVENUE FROM MANUFACTURING, INDUSTRIAL AND TELECOM AS REPORTED IN ENR'S SURVEY OF LEADING CONTRACTORS AND DESIGN FIRMS. SEE ENR.COM FOR EXPANDED LISTINGS.

## TELECOMMUNICATIONS

RANK	FIRM	REVENUE (\$ MIL.)
1	JACOBS	418.7
2	BURNS & MCDONNELL	197.0
3	TOWER ENGINEERING PROFESSIONALS	156.9
4	EXP	132.1
5	CONGRUEX	129.0
6	BLACK & VEATCH	112.7
7	CORGAN	76.1
8	KIMLEY-HORN	76.0
9	NETWORK CONNEX	76.0
10	HDR	73.2
11	WSP USA	70.4
12	AECOM	69.2
13	KCI TECHNOLOGIES INC.	66.5
14	BECHTEL	58.0
15	HBK ENGINEERING LLC	50.9
16	SALAS O'BRIEN	43.3
17	MORRISON HERSHFIELD	37.1
18	SHEEHAN NAGLE HARTRAY ARCHITECTS LTD.	34.0
19	TERRACON CONSULTANTS INC.	34.0
20	WILLDAN	32.9
21	COBB FENDLEY & ASSOCIATES INC.	32.5
22	SYSKA HENNESSY GROUP	29.7
23	GENSLER	29.4
24	J-U-B ENGINEERS INC.	28.0
25	VANDERWEIL ENGINEERS	27.8
26	ALFATECH CONSULTING ENGINEERS INC.	27.6
27	EN ENGINEERING LLC	27.4
28	ORBITAL ENGINEERING INC.	25.0
29	COLLIERS ENGINEERING & DESIGN	23.5
30	GPD GROUP	22.6
31	DEWBERRY	19.5
32	OLSSON INC.	19.1
33	EYP MISSION CRITICAL FACILITIES INC.	19.0
34	HIGHLAND ASSOCIATES	16.1
35	TECTONIC ENG'G CONSULT. GEOLOGISTS & SURVEYORS	16.0
36	LJA ENGINEERING	14.2
37	SWANSON RINK INC.	13.7
38	PENNONI	12.3
39	TEECOM	11.3
40	MICHAEL BAKER INTERNATIONAL	11.0
41	BOWMAN CONSULTING GROUP	9.5
42	PARSONS CORP.	8.5
43	BARGE DESIGN SOLUTIONS	8.1
44	HED	8.0
45	TAIT	7.4
46	KMB DESIGN GROUP LLC	7.3
47	THE LIRO GROUP	6.8
48	SAM LLC	6.7
49	PARAMETRIX	5.7
50	KLJ	5.7

## CHEMICAL PLANTS

RANK	FIRM	REVENUE (\$ MIL.)
1	WOOD	321.9
2	HARGROVE ENGINEERS + CONSTRUCTORS	234.2
3	S&B ENGINEERS AND CONSTRUCTORS LTD.	63.1
4	BECHTEL	60.5
5	BURNS & MCDONNELL	28.9
6	WSP USA	17.9
7	EXP	16.7
8	ZACHRY GROUP	16.6
9	HUNT GUILLOT & ASSOCIATES L.L.C.	12.9
10	SSOE GROUP	12.0
11	SNC-LAVALIN INC.	4.7
12	BARRY-WEHMILLER DESIGN GROUP	3.9
13	STANTEC INC.	3.5
14	IMEG CORP.	3.0
15	TERRACON CONSULTANTS INC.	2.3
16	SALAS O'BRIEN	2.3
17	FLUOR	2.1
18	GRAEF	2.0
19	PATRICK ENGINEERING INC.	1.8
20	STANLEY CONSULTANTS	1.8

## STEEL AND NON-FERROUS PLANTS

RANK	FIRM	REVENUE (\$ MIL.)
1	FLUOR	267.7
2	BECHTEL	142.6
3	AECOM	42.2
4	TETRA TECH INC.	12.0
5	STANLEY CONSULTANTS	10.8

## PHARMACEUTICALS

RANK	FIRM	REVENUE (\$ MIL.)
1	JACOBS	1,162.5
2	CRB	235.2
3	IPS-INTEGRATED PROJECT SERVICES LLC	214.5
4	FLUOR	135.2
5	GENESIS AEC	68.5
6	BARRY-WEHMILLER DESIGN GROUP	60.8
7	EWINGCOLE	42.0
8	POND	16.5
9	SNC-LAVALIN INC.	13.2
10	STANTEC INC.	12.6

## ELECTRONIC ASSEMBLY

RANK	FIRM	REVENUE (\$ MIL.)
1	JACOBS	43.2
2	SNC-LAVALIN INC.	30.5
3	BRPH COS. INC.	6.3
4	STANTEC INC.	4.6
5	POND	3.5

## FOOD AND BEVERAGE

RANK	FIRM	REVENUE (\$ MIL.)
1	DENNIS GROUP	96.8
2	BARRY-WEHMILLER DESIGN GROUP	92.8
3	BURNS & MCDONNELL	77.9
4	HASKELL	54.2
5	MEAD & HUNT INC.	43.5
6	POWER ENGINEERS INC.	43.4
7	STELLAR	40.7
8	CRB	26.8
9	SSEO GROUP	21.9
10	FLUOR	13.8

## PULP AND PAPER

RANK	FIRM	REVENUE (\$ MIL.)
1	JACOBS	106.6
2	WOOD	41.7
3	HARGROVE ENGINEERS + CONSTRUCTORS	18.6
4	S&B ENGINEERS AND CONSTRUCTORS LTD.	13.9
5	KIEWIT CORP.	5.9

## AUTO PLANTS

RANK	FIRM	REVENUE (\$ MIL.)
1	GHAFARI ASSOCIATES LLC	76.1
2	WOOD	62.9
3	JACOBS	59.5
4	LEIDOS	48.9
5	WSP USA	32.9
6	SSEO GROUP	25.5
7	GRESHAM SMITH	24.9
8	BARGE DESIGN SOLUTIONS	12.2
9	HED	10.1
10	BARTON MALOW HOLDINGS LLC	8.6

## SEMICONDUCTORS

RANK	FIRM	REVENUE (\$ MIL.)
1	JACOBS	301.9
2	SSEO GROUP	52.5
3	BARRY-WEHMILLER DESIGN GROUP	19.8
4	FLUOR	10.1
5	TETRA TECH INC.	4.5

## AEROSPACE

RANK	FIRM	REVENUE (\$ MIL.)
1	JACOBS	302.0
2	BURNS & MCDONNELL	50.9
3	HASKELL	17.6
4	GZA	17.5
5	TETRA TECH INC.	17.0
6	BRPH COS. INC.	9.5
7	RS&H INC.	8.5
8	STANTEC INC.	6.6
9	EXP	4.6
10	EUA (EPPSTEIN UHEN ARCHITECTS INC.)	3.0

## MINING

RANK	FIRM	REVENUE (\$ MIL.)
1	STANTEC INC.	66.5
2	BARR ENGINEERING CO.	53.3
3	WSP USA	48.9
4	WALDEMAR S. NELSON AND CO. INC.	27.8
5	TETRA TECH INC.	23.0
6	SNC-LAVALIN INC.	14.1
7	GEI CONSULTANTS INC.	8.4
8	CIVIL & ENVIRONMENTAL CONSULTANTS INC.	6.9
9	EXP	6.0
10	BOWMAN CONSULTING GROUP	3.0

## TRANSMISSION LINES AND CABLING

RANK	FIRM	REVENUE (\$ MIL.)
1	KCI TECHNOLOGIES INC.	50.5
2	BECHTEL	49.9
3	EN ENGINEERING LLC	27.4
4	BURNS & MCDONNELL	25.2
5	OLSSON INC.	19.1

## TOWERS AND ANTENNAE

RANK	FIRM	REVENUE (\$ MIL.)
1	JACOBS	252.0
2	BLACK & VEATCH	78.5
3	NETWORK CONNEX	73.4
4	BURNS & MCDONNELL	50.2
5	KIMLEY-HORN	33.3
6	DEWBERRY	16.3
7	KCI TECHNOLOGIES INC.	16.0
8	TECTONIC ENG'G CONSULT. GEOLOGISTS & SURVEYORS	16.0
9	MORRISON HERSHFIELD	11.9
10	TERRACON CONSULTANTS INC.	10.0

## DATA CENTERS

RANK	FIRM	REVENUE (\$ MIL.)
1	JACOBS	166.7
2	EXP	131.8
3	BURNS & MCDONNELL	121.6
4	CORGAN	76.1
5	HDR	73.2
6	WSP USA	70.1
7	AECOM	69.2
8	SALAS O'BRIEN	43.3
9	KIMLEY-HORN	42.7
10	SYSKA HENNESSY GROUP	29.7
11	GENSLER	29.4
12	VANDERWEIL ENGINEERS	24.1
13	MORRISON HERSHFIELD	22.0
14	TERRACON CONSULTANTS INC.	22.0
15	EYP MISSION CRITICAL FACILITIES INC.	19.0



# ENR 2022 TOP 500 DESIGN FIRMS DIRECTORY

## **A. Morton Thomas and Associates Inc.**

Michael J. Wiercinski, PE,  
President  
800 King Farm Blvd., 4th Floor  
Rockville, Md. 20850  
301-881-2545  
[www.amtengineering.com](http://www.amtengineering.com)

## **AECOM**

Troy Rudd, CEO  
13355 Noel Road  
Dallas, Texas 75240  
972-788-1000  
[aecom.com](http://aecom.com)

## **Affiliated Engineers Inc.**

Geoff McMahon, PE, LEED AP,  
NCEES, Principal, President  
5802 Research Park Blvd  
Madison, Wis. 53719  
6082382616  
[aeieng.com](http://aeieng.com)

## **AHL**

Bettina Mehnert, President and  
CEO  
733 Bishop St. Ste 3100  
Honolulu, Hawaii 96813  
808-523-9636  
[www.ahl.design](http://www.ahl.design)

## **AI Engineers Inc.**

Abul Islam, PE, FASCE,  
President/CEO  
919 Middle Street  
Middletown, Conn. 06457  
8606357740  
[www.aiengineers.com](http://www.aiengineers.com)

## **AKF Group**

Dino DeFeo, Managing Partner  
One Liberty Plaza, 165  
Broadway, 22nd Floor  
New York, N.Y. 10006

212-354-5656  
[akfgroup.com](http://akfgroup.com)

## **AKRF Inc.**

Karen Franz, CEO  
440 Park Ave South  
New York, N.Y. 10016  
646-388-9550  
[www.akrf.com](http://www.akrf.com)

## **AlfaTech Consulting Engineers Inc.**

Tim Chadwick, CEO  
1321 Ridder Park Drive, Suite 50  
San Jose, Calif. 95131  
408-487-1200  
[atce.com](http://atce.com)

## **Alfred Benesch & Co.**

Kevin Fitzpatrick, PE, CEO  
35 W. Wacker Drive  
Chicago, Ill. 60601  
312-565-0450  
[www.benesch.com](http://www.benesch.com)

## **Alliance**

Eric Peterson, AIA, LEED AP,  
Principal  
400 Clifton Avenue  
Minneapolis, Minn. 55403  
(612) 874-4100  
[www.alliance.us](http://www.alliance.us)

## **American Structurepoint**

Willis R. Conner, President  
9025 River Road, Suite 200  
Indianapolis, Ind. 46240  
317-547-5580  
[www.structurepoint.com](http://www.structurepoint.com)

## **Anvil Corp.**

Dena Lund, President  
1675 West Bakerview Road  
Bellingham, Wash. 98226  
360.671.1450  
[www.anvilcorp.com](http://www.anvilcorp.com)

## **AO Architects**

Jack Selman, President / CEO  
144 North Orange Street  
Orange, Calif. 92866  
714.639.5286  
[www.aoarchitects.com](http://www.aoarchitects.com)

## **Arcadis North**

**America/Callison RTKL**  
Peter Oosterveer, CEO and  
Chairman of the Executive Board  
630 Plaza Drive  
Highlands Ranch, Colo. 80129  
866-287-7373  
[www.arcadis.com](http://www.arcadis.com)

## **Ardurra Group Inc.**

Ernesto Aguilar, CEO  
4921 Memorial Highway, Suite  
300  
Tampa, Fla. 33634  
813-880-8881  
[www.ardurra.com](http://www.ardurra.com)

## **ARM Group Enterprises Inc.**

Bryan M. Wehler, P.E., P.G.,  
President, CEO  
1129 West Governor Road, PO  
Box 797  
Hershey, Pa. 17033  
717-533-8600  
[www.armgroup.net](http://www.armgroup.net)

## **Arora Engineers Inc.**

Manik K. Arora, PE, President &  
CEO  
61 Wilmington West Chester  
Pike  
Chadds Ford, Pa. 19317  
610-459-7900  
[www.aroraengineers.com](http://www.aroraengineers.com)

## **Array Architects**

Noah Tolson, President  
1 West Elm Street, Suite 400  
Conshohocken, Pa. 19428

# ENR 2022 TOP 500 DESIGN FIRMS DIRECTORY

610-270-0599

[array-architects.com](http://array-architects.com)

## **Arup**

Andrew Howard, Chairman

77 Water Street

New York, N.Y. 10005

2128963000

[www.arup.com](http://www.arup.com)

## **ATCS PLC**

Young Ho Change, CEO

13861 Sunrise Valley Drive,  
Suite 200

Herndon, Va. 20171

703-430-7500

[www.atcsplc.com](http://www.atcsplc.com)

## **Atwell LLC**

Brian R. Wenzel, P.E., President  
and CEO

Two Towne Square, Suite 700

Southfield, Mich. 48076

248-447-2000

[www.atwell-group.com](http://www.atwell-group.com)

## **Ayers Saint Gross**

Luanne Greene, President

1040 Hull Street, Suite 100

Baltimore, Md. 21230

410.347.8500

[www.ayerssaintgross.com](http://www.ayerssaintgross.com)

## **Ayres**

Bruce Ommen, PE, President

3433 Oakwood Hills Parkway

Eau Claire, Wis. 54701

715.834.3161

[www.AyresAssociates.com](http://www.AyresAssociates.com)

## **Bala Consulting Engineers**

Kimberly Burkert, CEO

443 South Gulph Road

King of Prussia, Pa. 19406

610-649-8000

[www.bala.com](http://www.bala.com)

## **Ballinger**

Louis A Meilink, Jr. FAIA, FACHA,  
ACHE, Senior Principal

833 Chestnut Street, Suite 1400

Philadelphia, Pa. 19107

2154460900

[www.ballinger.com](http://www.ballinger.com)

## **Barge Design Solutions**

Bob Higgins, President, CEO

615 3rd Avenue South, Suite 700

Nashville, Tenn. 37210

(615) 254-1500

[www.bargedesign.com](http://www.bargedesign.com)

## **Barr Engineering Co.**

Ward Swanson, CEO

4300 MarketPointe Drive, Suite  
200

Minneapolis, Minn. 55435

(952) 832-2600

[Barr.com](http://Barr.com)

## **Barry-Wehmiller Design Group**

Joeseph Wilhelm, President

8235 Forsyth Blvd Suite 900

St. Louis, Mo. 63105

314-778-4300

[www.bwdesigngroup.com](http://www.bwdesigngroup.com)

## **Bartlett & West Inc.**

Keith Warta, CEO

1200 SW Executive Dr

Topeka, Kan. 66615

785-228-3213

[www.bartwest.com](http://www.bartwest.com)

## **Barton & Loguidice D.P.C.**

John F. Brusa, Jr., President &  
CEO

443 Electronics Parkway

Liverpool, N.Y. 13088

3154575200

[www.bartonandloguidice.com](http://www.bartonandloguidice.com)

## **Baxter & Woodman Inc.**

John V. Ambrose, CEO/President

8678 Ridgefield Road

Crystal Lake, Ill. 60012

815-459-1260

[www.baxterwoodman.com](http://www.baxterwoodman.com)

## **BCC Engineering Inc.**

Jose A. Munoz, President / CEO

6401 SW 87th Avenue, Suite 200

Miami, Fla. 33173

3056702350

[www.bcceng.com](http://www.bcceng.com)

## **Beam Longest & Neff**

Jim Longest, President

8320 Craig Street

Indianapolis, Ind. 46250

8003825206

[www.b-l-n.com](http://www.b-l-n.com)

## **Bechtel**

B. Bechtel, CEO

12011 Sunset Hills Road, Suite  
110

Reston, Va. 20190

571-392-6300

[www.bechtel.com](http://www.bechtel.com)

## **BETA Group Inc.**

Joseph D'Alesio, President & CEO

701 George Washington Hwy.

Lincoln, R.I. 02865

401-333-2382

[www.beta-inc.com](http://www.beta-inc.com)

## **BGE Inc.**

Lee C. Lennard, PE, F.SAME,

President/CEO

10777 Westheimer Road, Suite  
400

Houston, Texas 77042

2815588700

[www.bgeinc.com](http://www.bgeinc.com)

# ENR 2022 TOP 500 DESIGN FIRMS DIRECTORY

## **BHDP Architecture**

Michael Habel, CEO  
302 West 3rd Street, Suite 500  
Cincinnati, Ohio 45202  
513.271.1634  
[www.bhdp.com](http://www.bhdp.com)

## **BKF Engineers**

Greg Hurd, CEO  
255 Shoreline Drive, Ste 200  
Redwood City, Calif. 94065  
650-482-6300  
[www.bkf.com](http://www.bkf.com)

## **BL Cos. Inc.**

Carolyn Stanworth, CEO &  
President  
355 Research Parkway  
Meriden, Conn. 06450  
203.630.1406  
[www.blcompanies.com](http://www.blcompanies.com)

## **Black & Veatch**

Steve Edwards, Chairman & CEO  
11401 Lamar Ave  
Overland Park, Kan. 66211  
913-458-2000  
[www.bv.com](http://www.bv.com)

## **Bohannon Huston Inc.**

Bruce J. Stidworthy, President  
7500 Jefferson Street NE  
Albuquerque, N.M. 87109  
505-823-1000  
[bhinc.com](http://bhinc.com)

## **Bolton & Menk Inc.**

Bradley C. DeWolf, P.E.,  
President/CEO  
1960 Premier Drive  
Mankato, Minn. 56001  
507-625-4171  
[www.bolton-menk.com](http://www.bolton-menk.com)

## **Borton-Lawson**

Frank Joanlanne, President &

CEO

613 Baltimore Drive, Suite 300  
Wilkes-Barre, Pa. 18702  
570-821-1999  
[borton-lawson.com](http://borton-lawson.com)

## **Boswell Engineering Inc.**

Stephen T. Boswell, Ph.D.,  
President / CEO  
330 Phillips Avenue  
South Hackensack, N.J. 07606  
201-641-0770  
[www.boswellengineering.com](http://www.boswellengineering.com)

## **Bowman Consulting Group**

Gary Bowman, PE, President +  
CEO  
12355 Sunrise Valley Drive,  
Suite 520  
Reston, Va. 20191  
703.464.1000  
[bowman.com](http://bowman.com)

## **Braun Intertec Corp.**

Jon Carlson, CEO  
11001 Hampshire Ave S  
Minneapolis, Minn. 55438  
952-995-2000  
[www.braunintertec.com](http://www.braunintertec.com)

## **Bridgefarmer & Associates Inc.**

Mansoor Ahsan, CEO  
2350 Valley View Lane  
Dallas, Texas 75234  
972-231-8800  
[www.bridgefarmer.com](http://www.bridgefarmer.com)

## **Brown and Caldwell**

Richard M. D'Amato, Chairman  
and CEO  
201 N. Civic Drive, Suite 300  
Walnut Creek, Calif. 94596  
(303) 239-5400  
[brownandcaldwell.com](http://brownandcaldwell.com)

## **BRPH Cos. Inc.**

Brian Curtin, President & CEO,  
Chairman of the Board  
5700 N Harbor City Blvd., Suite  
400  
Melbourne, Fla. 32940  
321-254-7666  
[brph.com](http://brph.com)

## **BSA LifeStructures**

Kevin Token, Chairman and CEO  
9365 Counselors Row, Suite 300  
Indianapolis, Ind. 46240  
3178197878  
[www.bsalifestructures.com](http://www.bsalifestructures.com)

## **BSC Group**

Sean P. O'Brien, PE, President &  
CEO  
15 Elkins St.  
Boston, Mass. 02127  
617-896-4300  
[www.bscgroup.com](http://www.bscgroup.com)

## **BSI Engineering**

Dan Heck, President  
300 E-Business Way Suite 300  
Cincinnati, Ohio 45241  
513-201-3100  
[www.bsiengr.com](http://www.bsiengr.com)

## **Building & Earth Sciences Inc.**

Deepa S. Bhate, CEO  
5545 Derby Drive  
Birmingham, Ala. 35210  
205-836-6300  
[www.BuildingAndEarth.com](http://www.BuildingAndEarth.com)

## **Burgess & Niple Inc.**

Mark E. Bernhardt, President /  
CEO  
5085 Reed Road  
Columbus, Ohio 43220  
614-459-2050  
[www.burgessniple.com](http://www.burgessniple.com)

# ENR 2022 TOP 500 DESIGN FIRMS DIRECTORY

## **Burns & McDonnell**

Ray Kowalik, Chairman and CEO  
9400 Ward Parkway  
Kansas City, Mo. 64114  
nan  
[www.burnsmcd.com](http://www.burnsmcd.com)

## **Burns Engineering Inc.**

Matthew J. Burns, President and CEO  
2001 Market Street, Suite 600  
Philadelphia, Pa. 19103  
215-979-7700  
[burns-group.com](http://burns-group.com)

## **Burrow Global LLC**

Michael Burrow, Chairman & CEO  
6200 Savoy Dr.  
Houston, Texas 77036  
7139630930  
[www.burrowglobal.com](http://www.burrowglobal.com)

## **BWBR**

Stephanie McDaniel, President/  
CEO  
380 St. Peter Street, Ste. 600  
Saint Paul, Minn. 55102  
651.222.3701  
[www.bwbr.com](http://www.bwbr.com)

## **C&I Engineering**

M. Gregg Fowler, Executive  
Director of Engineering  
1930 Bishop Lane, Suite 800  
Louisville, Ky. 40218  
5024514977  
[www.cieng.com](http://www.cieng.com)

## **CannonDesign**

Brad Lukanic, CEO  
360 Madison Ave  
New York City, N.Y. 10017  
212.972.9800  
[www.CannonDesign.com](http://www.CannonDesign.com)

## **Cardno Inc.**

Susan Reisbord, CEO & Managing  
Director  
10004 Park Meadows Drive,  
Suite 300  
Englewood, Colo. 80124  
720-257-5800  
[www.cardno.com](http://www.cardno.com)

## **Carollo Engineers Inc.**

B. Narayanan, CEO/President  
2795 Mitchell Dr.  
Walnut Creek, Calif. 94598  
9259321710  
[www.carollo.com](http://www.carollo.com)

## **CDG Inc.**

Mark Pugh, President and CEO  
1829 East Three Notch Street  
Andalusia, Ala. 36421  
(334) 222-9431  
[www.cdge.com](http://www.cdge.com)

## **CDI Engineering Solutions**

Steve Karlovic, CEO  
11200 Richmond Ave, Suite 500  
Houston, Texas 77082  
814.410.9553  
[www.cdiengineeringsolutions.com](http://www.cdiengineeringsolutions.com)

## **CDM Smith**

Tim B. Wall, Chairman of the  
Board and CEO  
75 State St  
Boston, Mass. 02109  
617-452-6000  
[www.cdmsmith.com](http://www.cdmsmith.com)

## **CESO Inc.**

David Oakes, Senior Principal  
and Chairman  
3601 Rigby Road, Suite 300  
Miamisburg, Ohio 45342  
330.435.8584  
[www.cesoinc.com](http://www.cesoinc.com)

## **CHA Consulting Inc. (CHA)**

James Stephenson, CEO, CHA  
Holdings, Inc. & President, CHA  
Consulting, Inc.  
575 Broadway, Suite 301  
Albany, N.Y. 12207  
5184534500  
[www.chacompanies.com](http://www.chacompanies.com)

## **Civil & Environmental Consultants Inc.**

Dustin J. Kuhlman, P.E., CEO  
333 Baldwin Road  
Pittsburgh, Pa. 15205  
800-365-2324  
[www.cecinc.com](http://www.cecinc.com)

## **Clark Nexsen**

Terri Hall, President  
4525 Main Street, Suite 1400  
Virginia Beach, Va. 23462  
7574555800  
[www.clarknexsen.com](http://www.clarknexsen.com)

## **CMTA Inc.**

James Benson, President  
10411 Meeting Street  
Prospect, Ky. 40059  
5023263085  
[www.cmta.com](http://www.cmta.com)

## **CO Architects**

Jenna Knudsen, President &  
Managing Principal  
5055 Wilshire Blvd. 9th Floor  
Los Angeles, Calif. 90036  
(323) 525-0500  
[www.coarchitects.com](http://www.coarchitects.com)

## **Cobb Fendley & Associates Inc.**

Monica Silver, PE, President  
13430 Northwest Freeway, Suite  
1100  
Houston, Texas 77040  
713.462.3242  
[www.cobbfendley.com](http://www.cobbfendley.com)

# ENR 2022 TOP 500 DESIGN FIRMS DIRECTORY

## **Coffman Engineers Inc.**

Dave Ruff, CEO and President  
1011 2nd Ave, Suite 400  
Seattle, Wash. 98101  
206-623-0717  
[www.coffman.com](http://www.coffman.com)

## **Colliers Engineering & Design**

Kevin Haney, President & CEO  
331 Newman Springs Road, Suite  
203  
Red Bank, N.J. 07701  
732-383-1950  
[www.colliersengineering.com](http://www.colliersengineering.com)

## **Collins Engineers Inc.**

Daniel G. Cecchi, P.E., President  
550 W. Jackson Boulevard, Suite  
1200  
Chicago, Ill. 60661  
3127049300  
[www.collinsengr.com](http://www.collinsengr.com)

## **Congruex**

Bill Beans, Co-Founder, CEO, &  
President  
2595 Canyon Blvd, Suite 400  
Boulder, Colo. 80302  
nan  
[www.congruex.com](http://www.congruex.com)

## **CONSOR Engineers**

Sandeep Patil, CEO  
155 N Wacker Dr. Suite 4150  
Chicago, Ill. 60606  
888-451-6822  
[consoreng.com](http://consoreng.com)

## **Cooper Carry**

Kyle Reis, President/CEO  
191 Peachtree Street, NE  
Atlanta, Ga. 30303  
404-237-2000  
[www.coopercarry.com](http://www.coopercarry.com)

## **Core States Group**

John M. Scheffey, President  
3039 Premiere Parkway, Suite  
700  
Duluth, Ga. 30097  
770.242.9550  
[core-states.com](http://core-states.com)

## **Corgan**

Scott Ruch, CEO  
401 North Houston Street  
Dallas, Texas 75202  
214-748-2000  
[www.corgan.com](http://www.corgan.com)

## **COWI North America**

Thomas Dahlgren, President and  
CEO  
1191 2nd Avenue, Suite 1110  
Seattle, Wash. 98101  
1-206-216-3933  
[www.cowi.com](http://www.cowi.com)

## **CPH Inc.**

Kamran Khosravani, CEO  
500 West Fulton Street  
Sanford, Fla. 32771  
407-322-6841  
[www.cphcorp.com](http://www.cphcorp.com)

## **CPL**

Todd M. Liebert, CEO  
255 Woodcliff Drive, Suite 200  
Fairport, N.Y. 14450  
8002749000  
[www.cplteam.com](http://www.cplteam.com)

## **Crafton Tull**

Matt Crafton, President & CEO  
901 N. 47th Street, Suite 400  
Rogers, Ark. 72756  
4796364838  
[www.craftontull.com](http://www.craftontull.com)

## **Crawford Murphy & Tilly Inc.**

Daniel R. Meckes, CEO

2750 W Washington Street  
Springfield, Ill. 62702  
2177878050  
[www.cmtengr.com](http://www.cmtengr.com)

## **CRB**

Jeff Biskup, CEO  
1251 NW Briarcliff Parkway,  
Suite 500  
Kansas City, Mo. 64116  
(816) 880-9800  
[www.crbgroup.com](http://www.crbgroup.com)

## **CSO**

Alan R. Tucker, President  
8831 Keystone Crossing  
Indianapolis, Ind. 46240  
317-848-7800  
[www.csoinc.net](http://www.csoinc.net)

## **CTL Engineering Inc.**

CK Satyapriya, President & CEO  
2860 Fisher Road  
Columbus, Ohio 43204  
614-276-8123  
[www.ctleng.com](http://www.ctleng.com)

## **CTL|Thompson Inc.**

Stuart Thompson, President and  
CEO  
7306 S. Alton Way  
Centennial, Colo. 80112  
303-825-0777  
[www.cltl.com](http://www.cltl.com)

## **CUBE 3**

Nik Middleton, Founding &  
Senior Partner / CEO  
370 Merrimack Street, Suite 337  
Lawrence, Mass. 01843  
978-989-9900  
[www.cube3.com](http://www.cube3.com)

## **Cunningham**

nan, nan  
201 Main Street SE, Suite 325

# ENR 2022 TOP 500 DESIGN FIRMS DIRECTORY

Minneapolis, Minn. 55414  
612-379-3400  
[www.cuningham.com](http://www.cuningham.com)

## **Cushing Terrell**

Greg Matthews, President  
13 N 23rd Street  
Billings, Mont. 59101  
406.248.7455  
[www.cushingterrell.com](http://www.cushingterrell.com)

## **D&B Engineers and Architects DPC**

Steven A. Fangmann, President  
330 Crossways Park Drive  
Woodbury, N.Y. 11797  
516-364-9890  
[www.db-eng.com](http://www.db-eng.com)

## **Dahlin Group Architecture Planning**

Nancy Keenan, President  
5865 Owens Drive  
Pleasanton, Calif. 94588  
9252517200  
[www.dahlingroup.com](http://www.dahlingroup.com)

## **D'Amato Conversano Inc. dba DCI Engineers**

Jeff Brink, Vice President/CEO  
818 Stewart Street, Suite 1000  
Seattle, Wash. 98101  
206-332-1900  
[www.dci-engineers.com](http://www.dci-engineers.com)

## **Dattner Architects**

Beth Greenberg, Principal,  
President  
1385 Broadway, 15th Floor  
New York, N.Y. 10023  
212.247.2660  
[www.dattner.com](http://www.dattner.com)

## **David Evans Enterprises Inc.**

Al Barkouli, Chairman and CEO  
2100 SW River Parkway

Portland, Ore. 97201  
503.223.6663  
[www.deainc.com](http://www.deainc.com)

## **Davis Partnership Architects**

David Daniel, President  
2901 Blake Street, Suite 100  
Denver, Colo. 80205  
303-861-8555  
[www.davispartnership.com](http://www.davispartnership.com)

## **Day & Zimmermann**

Harold L Yoh, III, Chairman &  
CEO  
1500 Spring Garden Street  
Philadelphia, Pa. 19130  
215-299-8000  
[www.dayzim.com](http://www.dayzim.com)

## **DCCM**

James F. Thompson, PE, DBIA,  
Chairman & CEO  
1800 Post Oak Boulevard, Suite  
450  
Houston, Texas 77056  
7138749162  
[www.dccm.com](http://www.dccm.com)

## **DE Corp.**

Michel Maksoud, PhD, PE,  
President / CEO  
3100 W. Alabama  
Houston, Texas 77098  
7135209570  
[www.decorp.com](http://www.decorp.com)

## **Degenkolb Engineers**

Stacy Bartoletti, CEO, Chairman  
of the Board  
375 Beale Street  
San Francisco, Calif. 94105  
415 392 6952  
[degenkolb.com](http://degenkolb.com)

## **Dekker/Perich/Sabatini Ltd.**

Benjamin Gardner,

CEO/Principal  
7601 Jefferson St Ne Ste 100  
Albuquerque, N.M. 87109-4496  
5057619700  
[www.dpsdesign.org](http://www.dpsdesign.org)

## **Dennis Group**

Tom Dennis, President & CEO  
1537 Main Street  
Springfield, Mass. 01103  
413.787.1785  
[www.dennisgroup.com](http://www.dennisgroup.com)

## **DeSimone Consulting Engineers**

Stephen V. DeSimone, Chairman  
and CEO  
140 Broadway, 25th Floor  
New York, N.Y. 10005  
212-532-2211  
[www.de-simone.com](http://www.de-simone.com)

## **Devcon Construction Inc.**

Gary Filizetti, President  
690 Gibraltar Drive  
Milpitas, Calif. 95035  
408-942-8200  
[www.devcon-const.com](http://www.devcon-const.com)

## **Dewberry**

Donald E. Stone, Jr., CEO  
8401 Arlington Blvd.  
Fairfax, Va. 22031  
703.849.0100  
[www.dewberry.com](http://www.dewberry.com)

## **DGA planning | architecture | interiors**

Randall Dowler AIA, President  
and Managing Principal  
550 Ellis Street  
Mountain View, Calif. 94043  
6509431660  
[www.DGAonline.com](http://www.DGAonline.com)

# ENR 2022 TOP 500 DESIGN FIRMS DIRECTORY

## **DLR Group**

Griff Davenport, FAIA, CEO,  
managing principal  
520 Nicollet Mall  
Minneapolis, Minn. 55402  
612.977.3500  
[www.dlrgroup.com](http://www.dlrgroup.com)

## **DLZ Corp.**

Vikram (Raj) V. Rajadhyaksha,  
P.E., Chairman & CEO  
6121 Huntley Road  
Columbus, Ohio 43229  
614-888-0040  
[www.dlz.com](http://www.dlz.com)

## **Dokken Engineering**

Richard T. Liptak, CEO  
110 Blue Ravine Road, Suite 200  
Folsom, Calif. 95630  
916-858-0642  
[www.dokkenengineering.com](http://www.dokkenengineering.com)

## **Donohue & Associates Inc.**

Craig W. Brunner, President  
3311 Weeden Creek Road  
Sheboygan, Wis. 53081  
920-208-0296  
[www.donohue-associates.com](http://www.donohue-associates.com)

## **DOWL**

Stewart Osgood, President and  
CEO  
8410 154th Avenue NE, Suite  
120  
Redmond, Wash. 98052  
425.869.2670  
[www.dowl.com](http://www.dowl.com)

## **Draper Aden Associates Inc.**

Jeff Lighthiser, CEO  
1030 Wilmer Avenue, Suite 100  
Richmond, Va. 23227  
804-264-2228  
[www.daa.com](http://www.daa.com)

## **DRMP Inc.**

Larry Smith Jr., PE,  
President/CEO  
941 Lake Baldwin Lane  
Orlando, Fla. 32814  
407-896-0594  
[drmp.com](http://drmp.com)

## **Dunham Associates**

Jay Rohkohl, President/CEO  
50 South Sixth Street, Suite 1100  
Minneapolis, Minn. 55402  
612-465-7550  
[www.dunhameng.com](http://www.dunhameng.com)

## **E.L. Robinson Engineering Co.**

Edward L Robinson, President  
5088 Washington St West  
Charleston, W.Va. 25313  
3047767473  
[WWW.ELROBINSON.COM](http://WWW.ELROBINSON.COM)

## **E4H Environments for Health Architecture**

Jim Johnson, CEO & Managing  
Partner  
501 Elm Street, Suite 500  
Dallas, Texas 75202  
888-781-8441  
[www.e4harchitecture.com](http://www.e4harchitecture.com)

## **EA Engineering Science and Tech. Inc.**

Ian D. MacFarlane, President,  
CEO, Chair  
225 Schilling Circle, Suite 400  
Hunt Valley, Md. 21031  
410-584-7000  
[www.eaest.com](http://www.eaest.com)

## **Electrical Consultants Inc.**

Bruce LaMeres, CEO  
3521 Gabel Road  
Billings, Mont. 59102  
4062599933  
[eciusa.com](http://eciusa.com)

## **Elkus Manfredi Architects**

David P Manfredi FAIA, LEED AP,  
CEO and Founding Principal  
25 Drydock Avenue  
Boston, Mass. 02210  
617.426.1300  
[www.elkus-manfredi.com](http://www.elkus-manfredi.com)

## **EMH&T**

Sandra C. Doyle-Ahern, President  
5500 New Albany Road  
New Albany, Ohio 43054  
614-775-4500  
[www.emht.com](http://www.emht.com)

## **EN Engineering LLC**

Adam Biggam, CEO  
28100 Torch Parkway, Suite 400  
Warrenville, Ill. 60555  
630-353-4000  
[www.enengineering.com](http://www.enengineering.com)

## **ENERCON**

Robert Bryan, co-President  
500 Townpark Lane  
Kennesaw, Ga. 30144  
770-919-1930  
[www.enercon.com](http://www.enercon.com)

## **Engineering Consulting Services (ECS)**

Anthony Fiorillo, PE, President  
14030 Thunderbolt Drive Suite  
500  
Chantilly, Va. 20151  
571-299-6000  
[www.ecslimited.com](http://www.ecslimited.com)

## **England-Thims & Miller Inc.**

N. Hugh Mathews, CEO  
14775 Old St. Augustine Road  
Jacksonville, Fla. 32258  
904.642.8990  
[www.etminc.com](http://www.etminc.com)

# ENR 2022 TOP 500 DESIGN FIRMS DIRECTORY

## **EnSafe Inc.**

DON BRADFORD, President and  
CEO  
5724 Summer Trees Drive  
Memphis, Tenn. 38134  
(901) 372-7962  
[www.ensafe.com](http://www.ensafe.com)

## **Environmental Design and Research (EDR)**

Jo Anne C. Gagliano, President  
217 Montgomery St., Suite 1000  
Syracuse, N.Y. 13202-1942  
315-471-0688  
[www.edrdpc.com](http://www.edrdpc.com)

## **Erdman Anthony**

Curt Helman, PE, President, CEO  
145 Culver Road  
Rochester, N.Y. 14620  
585-427-8888  
[www.erdmananthony.com](http://www.erdmananthony.com)

## **ESG Architecture & Design**

Aaron Roseth, President  
500 Washington Avenue South,  
Suite 1080  
Minneapolis, Minn. 55415  
6123395508  
[www.esgarch.com](http://www.esgarch.com)

## **ESP Associates Inc.**

Joseph W. Hendrick, President  
3475 lakemont Blvd.  
Fort Mill, S.C. 29708  
803-802-2440  
[www.espassociates.com](http://www.espassociates.com)

## **EUA (Eppstein Uhen Architects Inc.)**

Rich Tennessen, CEO  
333 East Chicago Street  
Milwaukee, Wis. 53202  
4142715350  
[www.eua.com](http://www.eua.com)

## **EwingCole**

Jared J. Loos, Chairman & CEO  
100 North 6th Street  
Philadelphia, Pa. 19106  
215-923-2020  
[www.ewingcole.com](http://www.ewingcole.com)

## **EXP**

Ivan Dvorak, Chairman + CEO  
205 N Michigan Ave, Suite 3600  
Chicago, Ill. 60601  
312.616.0000  
[www.exp.com](http://www.exp.com)

## **Exyte Americas Holding Inc.**

Jim Davis, SVP Operations, Exyte  
USA Region  
1001 Klein Road, Suite 400  
Plano, Texas 75074  
972-535-7300  
[www.exyte.net](http://www.exyte.net)

## **EYP Architecture & Engineering**

Kefalari Mason, Interim CEO  
201 Fuller Road  
Albany, N.Y. 12203  
518-795-3800  
[www.eypae.com](http://www.eypae.com)

## **Farnsworth Group Inc.**

Karen M. Jensen, President &  
CEO  
2709 McGraw Drive  
Bloomington, Ill. 61704  
309.663.8435  
[www.f-w.com](http://www.f-w.com)

## **FCA (Francis Cauffman Architects)**

John Campbell, President  
2000 Market Street, Suite 600  
Philadelphia, Pa. 19103  
215-568-8250  
[fcarchitects.com](http://fcarchitects.com)

## **Fehr & Peers**

Chris Mitchell, CEO  
100 Pringle Avenue #600  
Walnut Creek, Calif. 94596  
9259773200  
[www.fehrandpeers.com](http://www.fehrandpeers.com)

## **Fehr Graham - Engineering & Environmental**

Mick Gronewold, Board  
Chairman  
200 Prairie St., Ste. 208  
Rockford, Ill. 61107  
815.235.7643  
[www.fehrgraham.com](http://www.fehrgraham.com)

## **Fentress Architects**

Curtis Fentress, Principal in  
Charge of Design  
421 Broadway  
Denver, Colo. 80203  
3037225000  
[fentressarchitects.com](http://fentressarchitects.com)

## **FFKR Architects**

Kevin Mass, President  
730 Pacific Avenue  
Salt Lake City, Utah 84104  
801-521-6186  
[www.ffkr.com](http://www.ffkr.com)

## **FGM Architects Inc.**

John Dzarnowski, CEO  
1211 W 22nd St, Suite 700  
Oak Brook, Ill. 60523  
630-574-8300  
[fgmarchitects.com](http://fgmarchitects.com)

## **Fishbeck**

Jeffrey Schumaker,  
President/Principal  
1515 Arboretum Drive SE  
Grand Rapids, Mich. 49546  
616.575.3824  
[www.fishbeck.com](http://www.fishbeck.com)



# ENR 2022 TOP 500 DESIGN FIRMS DIRECTORY

## **Flad Architects**

Jeffrey Zutz, AIA, LEED AP,  
CEO/President  
644 Science Drive  
Madison, Wis. 53711  
608-238-2661  
[www.flad.com](http://www.flad.com)

## **Fluor**

David E. Constable, CEO  
6700 Las Colinas Blvd  
Irving, Texas 75039  
46-398-7000  
[www.fluor.com](http://www.fluor.com)

## **Foth**

Randy Homel, CEO  
2121 Innovation Court  
De Pere, Wis. 54115  
9204972500  
[www.foth.com](http://www.foth.com)

## **Freese and Nichols Inc.**

Brian Coltharp, President & CEO  
4055 International Plaza, Suite  
200  
Fort Worth, Texas 76110  
817-735-7300  
[www.freese.com](http://www.freese.com)

## **French & Parrello Associates**

Steven A. Tardy, PE, President &  
CEO  
1800 Route 34  
Wall Township, N.J. 07719  
732-312-9800  
[www.fpaengineers.com](http://www.fpaengineers.com)

## **FSB Architects + Engineers**

Philip McNayr, President & CEO  
5801 Broadway Ext., Suite 500  
Oklahoma City, Okla. 73118-  
7486  
405-840-2931  
[www.fsb-ae.com](http://www.fsb-ae.com)

## **Fugro Inc.**

Mark Heine, CEO  
6100, Hillcroft Avenue  
Houston, Texas 77081  
713-369-5600  
[www.fugro.com](http://www.fugro.com)

## **Fuss & O'Neill Inc.**

Kevin Grigg, CEO  
146 Hartford Road  
Manchester, Conn. 06040  
800.286.2469  
[www.fando.com](http://www.fando.com)

## **FXCollaborative**

Gerard Geier, Managing Partner  
1 Willoughby Square, 7th Floor  
Brooklyn, N.Y. 11201  
212.627.1700  
[www.fxcollaborative.com](http://www.fxcollaborative.com)

## **GAI Consultants Inc.**

Gary M. DeJidas, PE, MBA,  
Chairman and CEO  
385 E. Waterfront Drive  
Homestead, Pa. 15120  
412-476-2000  
[www.gaiconsultants.com](http://www.gaiconsultants.com)

## **Galloway & Co. Inc.**

Dave Guetig, President  
6162 S. Willow Drive, Suite 320  
Greenwood Village, Colo. 80111  
303-770-8884  
[www.gallowayus.com](http://www.gallowayus.com)

## **Gannett Fleming**

Robert M. Scaer, PE, Chairman of  
the Board and CEO  
207 Senate Avenue  
Camp Hill, Pa. 17011  
717.763.7211  
[www.gannettfleming.com](http://www.gannettfleming.com)

## **Garver**

Brock E. Hoskins, President and

## CEO

4701 Northshore Drive  
North Little Rock, Ark. 72118  
501-376-3633  
[www.garverusa.com](http://www.garverusa.com)

## **GBA (George Butler Associates)**

Tim Ross, CEO  
9801 Renner Boulevard  
Lenexa, Kan. 66219  
9135778405  
[www.gbateam.com](http://www.gbateam.com)

## **GBBN**

Matthew Schottelkotte, AIA,  
LEED AP, CEO  
332 E 8th St  
Cincinnati, Ohio 45202  
5132418700  
[www.gbbn.com](http://www.gbbn.com)

## **GEI Consultants Inc.**

Ronald P. Palmieri, P.E.,  
President and CEO  
400 Unicorn Park Drive  
Woburn, Mass. 01801  
781.721.4000  
[www.geiconsultants.com](http://www.geiconsultants.com)

## **Genesis AEC**

Norman Goldschmidt, President  
One Sentry Parkway, Suite 100  
Blue Bell, Pa. 19422  
610-592-0280  
[www.genesisaec.com](http://www.genesisaec.com)

## **Gensler**

Andy Cohen & Diane Hoskins,  
Co-CEOs  
500 South Figueroa Street  
Los Angeles, Calif. 90071  
nan  
[www.gensler.com](http://www.gensler.com)

# ENR 2022 TOP 500 DESIGN FIRMS DIRECTORY

## **Geocon**

Joseph Vettel, CEO  
6960 Flanders Drive  
San Diego, Calif. 92121  
858 558-6900  
[www.geoconinc.com](http://www.geoconinc.com)

## **GeoEngineers Inc.**

Michael Hutchinson, CEO  
17425 NE Union Hill Rd  
Redmond, Wash. 98052  
425-861-6000  
[www.geoengineers.com](http://www.geoengineers.com)

## **Geo-Logic Associates Inc.**

Gary L. Lass, PG, CEG, CHG, CEO  
2777 East Guasti Road  
Ontario, Calif. 91761  
(909) 626-2282  
[www.geo-logic.com](http://www.geo-logic.com)

## **Geosyntec Consultants**

Peter Zeeb, President and CEO  
900 Broken Sound Parkway NW,  
Suite 200  
Boca Raton, Fla. 334387  
561.995.0900  
[www.geosyntec.com](http://www.geosyntec.com)

## **GFF Inc.**

Evan Beattie, AIA, LEED AP,  
Chairman/CEO  
2808 Fairmount Street, Suite  
300  
Dallas, Texas 75201  
214-303-1500  
[www.gff.com](http://www.gff.com)

## **Ghafari Associates LLC**

Kouhaila Hammer, President +  
CEO  
17101 Michigan Avenue  
Dearborn, Mich. 48126  
313.441.3000  
[www.ghafari.com](http://www.ghafari.com)

## **GHD Inc.**

Jim Giannopoulos, CEO -  
Americas  
16451 SCIENTIFIC WAY  
Irvine, Calif. 92618  
602 216 7200  
[www.ghd.com](http://www.ghd.com)

## **GMB Architecture + Engineering**

David Bolt, CEO  
85 E 8th St., Suite 200  
Holland, Mich. 49423-3528  
616-796-0200  
[www.gmb.com](http://www.gmb.com)

## **Goodwyn Mills and Cawood Inc.**

Jeffrey Brewer, CEO  
2660 EastChase Lane, Suite 200  
Montgomery, Ala. 36117  
334.271.3200  
[www.gmcnetwork.com](http://www.gmcnetwork.com)

## **GPD Group**

Darrin Kotecki, President  
520 South Main Street  
Akron, Ohio 44311  
330-572-2100  
[gpdgroup.com](http://gpdgroup.com)

## **GRAEF**

John Kissinger, CEO  
275 West Wisconsin Avenue  
Suite 300  
Milwaukee, Wis. 53203  
414-259-1500  
[www.graef.com](http://www.graef.com)

## **Greeley and Hansen**

John C. Robak, Chairman and  
CEO  
100 S. Wacker Drive, Suite 1400  
Chicago, Ill. 60606  
800-837-9779  
[www.greeley-hansen.com](http://www.greeley-hansen.com)

## **Greenman-Pedersen Inc. (GPI)**

Christer Ericsson, CEO/President  
325 West Main Street  
Babylon, N.Y. 11702  
631-587-5060  
[www.gpinet.com](http://www.gpinet.com)

## **Gresham Smith**

Rodney Chester, CEO  
222 Second Avenue South, Suite  
1400  
Nashville, Tenn. 37201  
615.770.8100  
[www.greshamsmith.com](http://www.greshamsmith.com)

## **Group 70 International Inc. dba G70**

Norman Hong, Principal & CEO  
111 S. King Street, Suite 170  
Honolulu, Hawaii 96813  
(808) 523-5866  
[www.g70.design](http://www.g70.design)

## **GZA**

Patrick F. Sheehan,  
President/CEO  
249 Vanderbilt Avenue  
Norwood, Mass. 02062  
781-278-3700  
[www.gza.com](http://www.gza.com)

## **H.W. Lochner Inc.**

Terry Ruhl, CEO & Chairman  
225 W Washington, Suite 1200  
Chicago, Ill. 60606  
312-372-7346  
[www.hwlochner.com](http://www.hwlochner.com)

## **H2M architects + engineers**

Richard Humann, PE,  
President/CEO  
538 Broad Hollow Rd. 4th Floor  
East  
Melville, N.Y. 11747  
6317568000  
[www.h2m.com](http://www.h2m.com)

# ENR 2022 TOP 500 DESIGN FIRMS DIRECTORY

## **Haley & Aldrich Inc.**

SHAWN FIORE, CEO/PRESIDENT  
70 Blanchard Rd #204  
Burlington, Mass. 01803  
6178867400  
[www.HaleyAldrich.com](http://www.HaleyAldrich.com)

## **Half Associates Inc.**

Mark Edwards, President/CEO  
1201 N. Bowser Rd.  
Richardson, Texas 75081  
214-346-6200  
[www.halff.com](http://www.halff.com)

## **Hanson Professional Services Inc.**

Sergio A. Pecori, CEO and  
Chairman  
1525 S. Sixth St.  
Springfield, Ill. 62703  
217-788-2450  
[www.hanson-inc.com](http://www.hanson-inc.com)

## **Hardesty & Hanover LLC**

Sean A. Bluni, CEO  
1501 Broadway, 6th Floor  
New York, N.Y. 10036  
212-944-1150  
[www.hardesty-hanover.com](http://www.hardesty-hanover.com)

## **Hargrove Engineers + Constructors**

Ralph A. Hargrove, President +  
CEO  
20 S. Royal Street  
Mobile, Ala. 36602  
(251) 476-0605  
[www.hargrove-epc.com](http://www.hargrove-epc.com)

## **Hart Howerton**

A. James Tinson, CEO  
10 East 40th Street  
New York, N.Y. 10016  
212.683.5631  
[www.harthrowerton.com](http://www.harthrowerton.com)

## **Haskell**

Jim O'Leary, Chairman, CEO &  
President  
111 Riverside Avenue  
Jacksonville, Fla. 32202  
904-791-4500  
[www.haskell.com](http://www.haskell.com)

## **Hastings Architecture LLC**

William Hastings, David Bailey,  
David Powell, Principal  
225 Polk Avenue, Suite 100  
Nashville, Tenn. 37203  
6153291399  
[hastingsarchitecture.com](http://hastingsarchitecture.com)

## **Hazen and Sawyer**

Ron Taylor, PE, President and  
CEO  
498 7th Ave, 11th Floor  
New York, N.Y. 10018  
(212) 539-7000  
[www.hazenandsawyer.com](http://www.hazenandsawyer.com)

## **HBK Engineering LLC**

Ronald G Kaminski, President  
921 W. Van Buren  
Chicago, Ill. 60608  
3124320076  
[www.hbkengineering.com](http://www.hbkengineering.com)

## **HDR**

Eric Keen, Chairman & CEO  
1917 S. 67th Street  
Omaha, Neb. 68106  
402-399-1000  
[www.hdrinc.com](http://www.hdrinc.com)

## **HEAPY**

Mark Brumfield, CEO  
1400 W Dorothy Lane  
Dayton, Ohio 45409  
9372240861  
[www.heapy.com](http://www.heapy.com)

## **HED**

Peter Devereaux, Chairman and  
CEO  
26913 Northwestern Hwy, Ste  
200  
Southfield, Mich. 48033  
248-262-1500  
[www.hed.design](http://www.hed.design)

## **Henderson Engineers Inc.**

Kevin Lewis, CEO & President,  
Principal  
8345 Lenexa Drive, Ste. 300  
Lenexa, Kan. 66214  
913.742.5000  
[www.hendersonengineers.com](http://www.hendersonengineers.com)

## **Herbert Rowland & Grubic Inc.**

Robert C. Grubic, PE, CEO  
369 East Park Drive  
Harrisburg, Pa. 17111  
717-564-1121  
[www.hrg-inc.com](http://www.hrg-inc.com)

## **HGA**

Tim Carl, CEO  
420 North 5th Street, Suite 100  
Minneapolis, Minn. 55041  
612-758-4000  
[www.hga.com](http://www.hga.com)

## **Highland Associates**

Gil Ben-Ami, President  
One East 33rd Street  
New York, N.Y. 10016  
212-681-0200  
[www.highlandassociates.com](http://www.highlandassociates.com)

## **Hillis-Carnes Engineering Associates Inc.**

William Carnes, President  
10975 Guilford Road, Suite A  
Annapolis Junction, Md. 20701  
4108804788  
[www.hcea.com](http://www.hcea.com)

# ENR 2022 TOP 500 DESIGN FIRMS DIRECTORY

## **HKS**

Dan Noble, President & CEO  
350 North Saint Paul, Suite 100  
Dallas, Texas 75201  
214-969-5599  
[www.hksinc.com](http://www.hksinc.com)

## **HLW**

John Gering, Managing Partner  
5 Penn Plaza, 5th Floor  
New York, N.Y. 10001  
2123534600  
[www.hlw.design](http://www.hlw.design)

## **HMC Architects**

Brian Staton, President, CEO,  
Chairman  
3546 Concours Street  
Ontario, Calif. 91764  
909.989.9979  
[www.hmcarchitects.com](http://www.hmcarchitects.com)

## **HNTB Cos.**

Rob Slimp, Chairman and CEO  
715 Kirk Drive  
Kansas City, Mo. 64105  
816-472-1201  
[www.hntb.com](http://www.hntb.com)

## **HOK**

Bill Hellmuth, FAIA, Chairman +  
CEO  
1065 Avenue of the Americas  
New York, N.Y. 10018  
646 217 3464  
[www.hok.com](http://www.hok.com)

## **Hord Coplan Macht**

Lee Coplan, FAIA, CEO  
750 East Pratt Street, Suite 1200  
Baltimore, Md. 21202  
4108377311  
[www.hcm2.com](http://www.hcm2.com)

## **Houston Engineering Inc.**

C. Gregg Thielman, Pres/CEO

1401 21st Avenue North  
Fargo, N.D. 58104  
701-237-5065  
[www.houstoneng.com](http://www.houstoneng.com)

## **HR GREEN INC.**

Jason Poppen, CEO  
8710 EARHART LANE SW  
Cedar Rapids, Iowa 52404  
319-841-4000  
[www.hrgreen.com](http://www.hrgreen.com)

## **Hubbell Roth & Clark Inc.**

Daniel W. Mitchell, P.E.,  
President  
555 HULET DRIVE  
Bloomfield Hills, Mich. 48302  
2484546300  
[www.hrcengr.com](http://www.hrcengr.com)

## **Huckabee**

Christopher M. Huckabee, CEO  
801 Cherry Street, Suite 500  
Fort Worth, Texas 76102  
817-377-2969  
[www.huckabee-inc.com](http://www.huckabee-inc.com)

## **Huitt-Zollars Inc.**

Robert J. McDermott, P.E.,  
President  
1717 McKinney Avenue, Suite  
1400  
Dallas, Texas 75202  
214-871-3311  
[www.huitt-zollars.com](http://www.huitt-zollars.com)

## **Humphreys & Partners Architects**

nan, nan  
5339 Alpha Road, Suite 300  
Dallas, Texas 75240  
972-701-9636  
[humphreys.com](http://humphreys.com)

## **Hunt Guillot & Associates L.L.C.**

Trott Hunt, President  
603 East Reynolds Drive  
Ruston, La. 71270  
3182556825  
[www.hga-llc.com](http://www.hga-llc.com)

## **Hussey Gay Bell**

G. Holmes Bell, IV, PE, CEO &  
Chairman  
329 Commercial Drive  
Savannah, Ga. 31406  
9123544626  
[www.husseygaybell.com](http://www.husseygaybell.com)

## **I. C. Thomasson Associates Inc.**

John Wimberly, PE, CEO  
2950 Kraft Drive  
Nashville, Tenn. 37204  
615-346-3400  
[www.ict Thomasson.com](http://www.ict Thomasson.com)

## **IBI Group Inc.**

Scott Stewart, CEO  
55 St Clair Avenue West  
Columbus, Ohio 43235  
nan

## **IMEG Corp.**

Paul VanDuynes, President/CEO  
623 26th Avenue  
Rock Island, Ill. 61201  
309-788-0673  
[www.imegcorp.com](http://www.imegcorp.com)

## **Infrastructure Consulting & Engineering PLLC**

Elham Farzam, President / CEO  
1021 Briargate Circle  
Columbia, S.C. 29210  
803-822-0333  
[www.ice-eng.com](http://www.ice-eng.com)

## **Integral Group**

William Overturf, III, CEO &  
President

# ENR 2022 TOP 500 DESIGN FIRMS DIRECTORY

427 13th Street  
Oakland, Calif. 94612  
510.663.2070  
[www.integralgroup.com](http://www.integralgroup.com)

## **Integrus Architecture PS**

Brian Carter, CEO  
10 S. Cedar  
Spokane, Wash. 99201  
509.838.8681  
[www.integrusarch.com](http://www.integrusarch.com)

## **Intertek-PSI**

Gavin Campbell, President  
545 E. Algonquin Rd.  
Arlington Heights, Ill. 60005  
(800) 967-5352  
[www.intertek.com](http://www.intertek.com)

## **IPS-Integrated Project Services LLC**

Dave Goswami, P.E., Chairman & CEO  
721 Arbor Way, Suite 100  
Blue Bell, Pa. 19422  
610-828-4090  
[www.ipsdb.com](http://www.ipsdb.com)

## **ISG**

Lynn Bruns, CEO  
115 E. Hickory St. Suite 300  
Mankato, Minn. 56001  
507-387-6651  
[www.ISGInc.com](http://www.ISGInc.com)

## **Jacobs**

Steven J. Demetriou, Chair and CEO  
1999 Bryan Street, Suite 1200  
Dallas, Texas 75201  
1.214.638.0145  
[www.jacobs.com](http://www.jacobs.com)

## **Jaros Baum & Bolles**

Scott E. Frank, Managing Partner  
80 Pine Street

New York, N.Y. 10005  
212-530-9300  
[www.jbb.com](http://www.jbb.com)

## **JCJ Architecture**

James E. LaPosta, Jr., FAIA, LEED AP, Principal, Chief Architectural Officer  
120 Huyshope Ave, Suite 400  
Hartford, Conn. 06106  
860-247-9226  
[www.JCJ.com](http://www.JCJ.com)

## **Jensen Hughes**

Raj Arora, CEO  
3610 Commerce Drive, Suite 817  
Baltimore, Md. 21227  
1-410-737-8677  
[www.jensenhughes.com](http://www.jensenhughes.com)

## **JLG Architects**

Michelle Mongeon Allen, CEO  
710 S 2nd Street - 8th Floor  
Minneapolis, Minn. 55401  
7017461727  
[www.jlgarchitects.com](http://www.jlgarchitects.com)

## **Johnson Mirmiran & Thompson Inc. (JMT)**

John A. Moeller, President  
40 Wight Avenue  
Hunt Valley, Md. 21030  
410-329-3100  
[www.jmt.com](http://www.jmt.com)

## **Jones Edmunds & Associates Inc.**

Stanley F. Ferreira, Jr., PE, President & CEO  
730 NE Waldo Road  
Gainesville, Fla. 32641  
352.377.5821  
[www.jonesedmunds.com](http://www.jonesedmunds.com)

## **Jordan & Skala Engineers**

Timothy Milam, President;

Principal  
4275 Shackleford Rd  
Norcross, Ga. 30093  
7704475547  
[www.jordanskala.com](http://www.jordanskala.com)

## **J-U-B ENGINEERS Inc.**

Timothy J. Haener, PE, President and CEO  
2760 West Excursion Lane, Suite 400  
Meridian, Idaho 83642  
208-376-7330  
[web.jub.com](http://web.jub.com)

## **Kahler Slater**

Allan R Krueger, CEO  
111 W Wisconsin Avenue  
Milwaukee, Wis. 53203  
414-272-2000  
[www.kahlerslater.com](http://www.kahlerslater.com)

## **Kapur & Associates Inc.**

Ramesh Kapur, President/CEO  
7711 N. Port Washington Road  
Milwaukee, Wis. 53217  
414-751-7200  
[kapurengineers.com](http://kapurengineers.com)

## **KCI Technologies Inc.**

Nathan Beil, Chairman & CEO  
936 Ridgebrook Road  
Sparks, Md. 21152  
410-316-7800  
[www.kci.com](http://www.kci.com)

## **Kendall/Heaton Associates Inc.**

John O'Connell, CEO  
3050 Post Oak Boulevard, Suite 1000  
Houston, Texas 77056  
713-877-1192  
[www.kendall-heaton.com](http://www.kendall-heaton.com)

# ENR 2022 TOP 500 DESIGN FIRMS DIRECTORY

## **Kennedy/Jenks Consultants Inc.**

Keith London, CEO/President  
275 Battery Street, Suite 550  
San Francisco, Calif. 94111  
415-243-2150  
[www.kennedyjenks.com](http://www.kennedyjenks.com)

## **Kier & Wright**

Chuck McCallum, President  
3350 Scott Blvd., Bldg 22  
Santa Clara, Calif. 95054-3106  
925.245.8788  
[www.kierwright.com](http://www.kierwright.com)

## **Kiewit Corp.**

Rick Lanoha, CEO  
1000 Kiewit Plaza  
Omaha, Neb. 68131  
nan  
[www.kiewit.com](http://www.kiewit.com)

## **Kimley-Horn**

Steven E Lefton, President  
421 Fayetteville Street  
Raleigh, N.C. 27601  
919-677-2000  
[www.kimley-horn.com](http://www.kimley-horn.com)

## **Kirksey Architects Inc.**

Wesley Good, President  
6909 Portwest Drive  
Houston, Texas 77024  
713-850-9600  
[www.kirksey.com](http://www.kirksey.com)

## **Kisinger Campo & Associates Corp**

Paul G Foley, CEO  
201 N Franklin St, Suite 400  
Tampa, Fla. 33602  
813-871-5331  
[www.kisingercampo.com](http://www.kisingercampo.com)

## **Kleinfelder**

Louis Armstrong, CEO

550 West C Street, Suite 1200  
San Diego, Calif. 92101  
619-831-4600  
[www.kleinfelder.com](http://www.kleinfelder.com)

## **KLJ**

Eric Michel, CEO  
4585 COLEMAN STREET  
Bismarck, N.D. 58503  
7013558400  
[www.kljeng.com](http://www.kljeng.com)

## **Kohn Pedersen Fox Associates PC**

James von Klemperer, President  
11 West 42nd Street  
New York, N.Y. 10036  
212 977 6500  
[www.kpf.com](http://www.kpf.com)

## **KPFF Consulting Engineers**

John Gavan, CEO/President  
1601 5th Ave  
Seattle, Wash. 98101  
206.926.0699  
[www.kpff.com](http://www.kpff.com)

## **Krazan & Associates**

Dean Alexander, President  
215 W. Dakota Avenue  
Clovis, Calif. 93612  
5593482200  
[www.Krazan.com](http://www.Krazan.com)

## **KS Engineers P.C.**

Kamal Shahid, President  
494 Broad Street, 4th Floor  
Newark, N.J. 07102  
973-623-2999  
[www.kseng.com](http://www.kseng.com)

## **KSA Engineers Inc.**

Mitchell L. Fortner, President  
140 E. Tyler Street, Ste. 600  
Longview, Texas 75601

903-236-7700  
[www.ksaeng.com](http://www.ksaeng.com)

## **KTGY Architecture + Planning**

Tricia Esser, CEO  
17911 Von Karman Avenue,  
Suite 200  
Irvine, Calif. 92614  
888.456.KTGY  
[www.ktgy.com](http://www.ktgy.com)

## **KZF Design**

Doug Marsh, President & CEO  
700 Broadway St  
Cincinnati, Ohio 45202  
513-621-6211  
[www.kzf.com](http://www.kzf.com)

## **LaBella Associates DPC**

Steven Metzger, CEO  
300 State Street  
Rochester, N.Y. 14614  
(585) 454-6110  
[www.labellapc.com](http://www.labellapc.com)

## **Lamp Rynearson Inc.**

Nancy Pridal, President -CEO  
14710 W Dodge RD STE 100  
Omaha, Neb. 68154  
402-496-2498  
[LampRynearson.com](http://LampRynearson.com)

## **Landrum & Brown Inc.**

Mark A. Perryman, President &  
CEO  
4445 Lake Forest Drive, Suite  
700  
Cincinnati, Ohio 45242  
513-530-5333  
[www.landrumbrown.com](http://www.landrumbrown.com)

## **LANGAN**

David T. Gockel, President/CEO  
300 Kimball Drive, 4th Floor  
Parsippany, N.J. 07054

# ENR 2022 TOP 500 DESIGN FIRMS DIRECTORY

9735604900  
[www.langan.com](http://www.langan.com)

## **Lanier & Associates Consulting Engineers Inc.**

Price Lanier, President  
4101 Magazine Street  
New Orleans, La. 70115  
504-895-0368  
[www.lanier-engineers.com](http://www.lanier-engineers.com)

## **Larson Design Group Inc.**

David Martin, CEO  
1000 Commerce Park, Suite 201  
Williamsport, Pa. 17701  
5703236603  
[www.larsondesigngroup.com](http://www.larsondesigngroup.com)

## **Lawrence Group**

Steve Smith, CEO  
319 N 4th Street, Suite 1000  
St. Louis, Mo. 63102  
314-231-5700  
[www.thelawrencegroup.com](http://www.thelawrencegroup.com)

## **Leidos**

Roger Krone, Chairman and CEO  
1750 Presidents Street  
Reston, Va. 20190  
312.605.4365  
[www.leidos.com](http://www.leidos.com)

## **Leighton Group Inc.**

Terry Brennan, Chairman  
17781 Cowan  
Irvine, Calif. 92614  
9492501421  
[www.leightongroup.com](http://www.leightongroup.com)

## **LEO A DALY**

Steven A. Lichtenberger, AIA,  
NCARB, LEED AP, President  
8600 Indian Hills Drive  
Omaha, Neb. 68114  
4023918111  
[www.leoadaly.com](http://www.leoadaly.com)

## **LHB Inc.**

Rick Carter, CEO  
21 West Superior Street, Suite  
500  
Duluth, Minn. 55802  
218.727.8446  
[www.lhbcorp.com](http://www.lhbcorp.com)

## **Lionakis**

Don McAllister, President  
1919 19th St.  
Sacramento, Calif. 95811  
9165581919  
[www.lionakis.com](http://www.lionakis.com)

## **Little Diversified Architectural Consulting Inc.**

Carol Rickard-Brideau, CEO  
615 S. College Street, Suite 1600  
Charlotte, N.C. 28202  
7045256350  
[www.littleonline.com](http://www.littleonline.com)

## **LJA Engineering**

James Ross, PE, President  
2929 Briarpark, Suite 600  
Houston, Texas 77042  
713-953-5200  
[www.lja.com](http://www.lja.com)

## **LJB Inc.**

Rod Sommer, CEO  
2500 Newmark Drive  
Miamisburg, Ohio 45342  
9372595000  
[www.ljbinc.com](http://www.ljbinc.com)

## **LMN Architects**

Sam Miller, Managing Partner  
801 Second Ave, Suite 501  
Seattle, Wash. 98104  
206-682-3460  
[www.lmnarchitects.com](http://www.lmnarchitects.com)

## **Lochmueller Group Inc.**

Douglas Shatto, PE, PTOE,

President, CEO  
6200 Vogel Road  
Evansville, Ind. 47715  
812-479-6200  
[www.lochgroup.com](http://www.lochgroup.com)

## **Lockwood Andrews & Newnam Inc.**

Wayne Swafford, President  
2925 Briarpark Drive, Suite 400  
Houston, Texas 77042  
713.266.6900  
[www.lan-inc.com](http://www.lan-inc.com)

## **Loring Consulting Engineers Inc.**

Michael DesRochers, PE, LEED  
AP, Chairman & CEO  
360 West 31s Street - 14th Floor  
New York, N.Y. 10001-2727  
212-563-7400  
[www.loringengineers.com](http://www.loringengineers.com)

## **LPA Inc.**

Wendy Rogers, CEO  
5301 California Ave., Ste. 100  
Irvine, Calif. 92617  
949-261-1001  
[www.lpadesignstudios.com](http://www.lpadesignstudios.com)

## **LRK Inc.**

Frank Ricks, President/CEO  
50 South B.B. King Blvd., Ste. 600  
Memphis, Tenn. 38103  
901-521-1440  
[www.lrk.com](http://www.lrk.com)

## **LS3P**

Marc Marchant, CEO  
205 1/2 King Street  
Charleston, S.C. 29464  
843.577.4444  
[www.LS3P.com](http://www.LS3P.com)

## **M&S Engineering LLC**

Brian Meuth, P.E., President, CEO

# ENR 2022 TOP 500 DESIGN FIRMS DIRECTORY

6477 FM 311  
Spring Branch, Texas 78070  
830-228-5446  
[www.MSENGR.com](http://www.MSENGR.com)

## **Macgregor Associates Architects Inc.**

Federico Chiappina, President  
2727 Paces Ferry Road SE,  
Building 2 Suite 1400  
Atlanta, Ga. 30339  
770-432-9400  
[macgregorassoc.com](http://macgregorassoc.com)

## **Magnusson Klemencic Associates**

Ronald Klemencic, CEO  
1301 Fifth Avenue, Ste 3200  
Seattle, Wash. 98101  
2062921200  
[www.mka.com](http://www.mka.com)

## **Manhard Consulting Ltd**

Donald Manhard, President  
One Overlook Point, Suite 290  
Lincolnshire, Ill. 60069  
847-325-7238  
[www.manhard.com](http://www.manhard.com)

## **Mark Thomas**

Zach Siviglia, CEO + President  
2833 Junction Avenue, Suite 110  
San Jose, Calif. 95134  
(408) 453-5373  
[markthomas.com](http://markthomas.com)

## **Martin/Martin Inc.**

Shane McCormick, President  
12499 West Colfax Avenue  
Lakewood, Colo. 80215  
303-431-6100  
[www.martinmartin.com](http://www.martinmartin.com)

## **Massa Multimedia Architecture PC**

Gabriel J. Massa, AIA, CEO

3297 Route 66  
Neptune, N.J. 07753  
732-918-2300  
[www.mma-architects.com](http://www.mma-architects.com)

## **Matrix New World Engineering**

Jayne Warne, CEO  
26 Columbia Turnpike  
Florham Park, N.J. 07932  
972 240 1800  
[www.mnwe.com](http://www.mnwe.com)

## **Matrix Technologies Inc.**

David Blaida, President & CEO  
1760 Indian Wood Circle  
Maumee, Ohio 43537  
419-897-7200  
[www.matrixti.com](http://www.matrixti.com)

## **Mazzetti**

Walt Vernon, CEO  
220 Montgomery Street, Suite  
650  
San Francisco, Calif. 94104  
4156323266  
[www.mazzetti.com](http://www.mazzetti.com)

## **MBH Architects**

John McNulty, Founding  
Architect, CEO  
960 Atlantic Ave  
Alameda, Calif. 94501  
510-865-8663  
[www.mbharch.com](http://www.mbharch.com)

## **McAdams**

Mike Munn, CEO  
2905 Meridian Parkway  
Durham, N.C. 27713  
919-361-5000  
[McAdamsCo.com](http://McAdamsCo.com)

## **McClure Engineering**

Terry Lutz, CEO  
1360 NW 121st Street

Clive, Iowa 50325  
515-964-1229  
[www.mcclurevision.com](http://www.mcclurevision.com)

## **McCormick Taylor Inc.**

James C. Wiggins, CEO  
1818 Market Street, 16th Floor  
Philadelphia, Pa. 19103  
(215) 592-4200  
[www.mccormicktaylor.com](http://www.mccormicktaylor.com)

## **McKim & Creed Inc.**

Street Lee, CEO  
1730 Varsity Drive, Suite 500  
Raleigh, N.C. 27606  
919.233.8091  
[www.mckimcreed.com](http://www.mckimcreed.com)

## **McLaren Engineering Group**

Jeremy Billig, PE, President +  
CEO  
530 Chestnut Ridge Rd  
Woodcliff Lake, N.J. 07677  
2017756000  
[www.mgmlaren.com](http://www.mgmlaren.com)

## **McMahon Associates Inc.**

Paul Benedict, President & CEO  
1445 McMahon Drive  
Neenah, Wis. 54956  
920-751-4200  
[www.mcmgrp.com](http://www.mcmgrp.com)

## **McMillan Pazdan Smith LLC**

Chad Cousins, CEO  
400 August Street, Suite 200  
Greenville, S.C. 29601  
(864)242-2033  
[www.mcmillanpazdansmith.com](http://www.mcmillanpazdansmith.com)

## **ME Engineers**

Mike Hart, CEO, Senior Principal,  
Managing Director  
14143 Denver West Pkwy Suite  
300  
Golden, Colo. 80004



# ENR 2022 TOP 500 DESIGN FIRMS DIRECTORY

3034216655  
[me-engineers.com](http://me-engineers.com)

## **Mead & Hunt Inc.**

Andrew Platz, Chairman, CEO  
and President  
2440 Deming Way  
Middleton, Wis. 53562  
608-273-6380  
[www.meadhunt.com](http://www.meadhunt.com)

## **Merrick & Co.**

Christopher Sherry, Chairman,  
CEO and President  
5970 Greenwood Plaza Blvd.  
Greenwood Village, Colo. 80111  
303-751-0741  
[www.merrick.com](http://www.merrick.com)

## **Mesa Associates Inc.**

R.C. Savant,  
President/CEO/Owner  
480 Production Avenue  
Madison, Ala. 35758  
2562582100  
[www.mesainc.com](http://www.mesainc.com)

## **MG Engineering D.P.C.**

Michael Gerazounis, P.E., LEED  
AP, President/Managing  
Principal  
116 West 32nd Street  
New York, N.Y. 10001  
212-643-9055  
[www.mgedpc.net](http://www.mgedpc.net)

## **Michael Baker International**

Brian A. Lutes, CEO  
500 Grant Street, Suite 5400  
Pittsburgh, Pa. 15219  
412) 918-4000  
[www.mbakintl.com](http://www.mbakintl.com)

## **Middough Inc.**

Ronald R. Ledin, Chairman, CEO  
1901 East 13th Street

Cleveland, Ohio 44114  
216-367-6000  
[www.Middough.com](http://www.Middough.com)

## **Milhouse Engineering & Construction Inc.**

Wilbur C. Milhouse III,  
Chairman/CEO  
333 South Wabash Avenue  
Chicago, Ill. 60604  
312-987-0061  
[www.milhouseinc.com](http://www.milhouseinc.com)

## **Modjeski and Masters Inc.**

Michael F. Britt, President and  
CEO  
100erling Parkway, Suite 302  
Mechanicsburg, Pa. 17050  
(717) 790-9565  
[www.modjeski.com](http://www.modjeski.com)

## **Moffatt & Nichol**

Eric Nichol, Chairman & CEO  
4225 E. Conant Street  
Long Beach, Calif. 90808  
562.590.6500  
[www.moffattnichol.com](http://www.moffattnichol.com)

## **Moody Nolan**

Jonathan Moody, AIA, NCARB,  
NOMA, LEED AP, Fitwel  
Ambassador, CEO and President  
300 Spruce Street, Suite 300  
Columbus, Ohio 43215  
614-461-4664  
[www.moodynolan.com](http://www.moodynolan.com)

## **Morrison Hershfield**

Anthony Karakatsanis, President  
and CEO  
1455 Lincoln Parkway, Suite 500  
Atlanta, Ga. 30346  
770-379-8500  
[morrisonhershfield.com](http://morrisonhershfield.com)

## **Morrison-Maierle Inc.**

Scott Murphy, President/CEO  
1 Engineering Place  
Helena, Mont. 59602  
nan  
[www.m-m.net](http://www.m-m.net)

## **Moseley Architects**

Stewart Roberson, President  
3200 Norfolk Street  
Richmond, Va. 23230  
804-794-7555  
[www.moseleyarchitects.com](http://www.moseleyarchitects.com)

## **Mott MacDonald**

Michael C. Isola, PE, President  
and CEO  
111 Wood Avenue South  
Iselin, N.J. 08830  
973-379-3400  
[www.mottmac.com](http://www.mottmac.com)

## **ms consultants inc.**

Michael D. Kratofil, PE, President  
and CEO  
2221 Schrock Rd.  
Columbus, Ohio 43229  
614-898-7100  
[www.msconsultants.com](http://www.msconsultants.com)

## **MSA Professional Services**

Gil Hantzsch, CEO  
1230 S. Blvd.  
Baraboo, Wis. 53913  
608-356-2771  
[www.msa-ps.com](http://www.msa-ps.com)

## **Mueser Rutledge Consulting Engineers PLLC**

Peter W. Deming, Principal  
14 Penn Plaza  
New York, N.Y. 10122  
917-339-9300  
[www.mrce.com](http://www.mrce.com)

# ENR 2022 TOP 500 DESIGN FIRMS DIRECTORY

## **NAC Architecture**

Dana Harbaugh, Principal  
1203 W. Riverside  
Spokane, Wash. 99201  
509-838-8240  
[nacarchitecture.com](http://nacarchitecture.com)

## **Neel-Schaffer Inc.**

Hibbett Neel, PE, President and  
CEO  
125 South Congress Street, Suite  
1100  
Jackson, Miss. 39201  
601.948.3071  
[www.neel-schaffer.com](http://www.neel-schaffer.com)

## **Network Connex**

Chris Larocca, CEO  
5101 Thatcher Rd.  
Downers Grove, Ill. 60515  
(630) 851-7751  
[www.networkconnex.com](http://www.networkconnex.com)

## **Newcomb & Boyd**

Greg Johnson, Partner  
303 Peachtree Center Avenue,  
NE, Suite 525  
Atlanta, Ga. 30303  
404-730-8400  
[www.newcomb-boyd.com](http://www.newcomb-boyd.com)

## **Niles Bolton Associates**

Niles Bolton, Chairman & CEO  
3060 Peachtree Road NW Suite  
600  
Atlanta, Ga. 30305  
404-365-7600  
[www.nilesbolton.com](http://www.nilesbolton.com)

## **Ninyo & Moore Geotech. & Enviro. Sciences**

Avram Ninyo, Principal  
Engineer/President  
5710 Ruffin Road  
San Diego, Calif. 92123

858/576-1000  
[www.ninyoandmoore.com](http://www.ninyoandmoore.com)

## **NORR**

Brian Gerstmar, President & CEO  
325 North LaSalle Street, Suite  
500  
Chicago, Ill. 60654  
312 424 2400  
[www.norr.com](http://www.norr.com)

## **Northeast-Western Energy Systems**

Joseph Dougherty, CEO  
8330 State Road  
Philadelphia, Pa. 19136  
215.514.3261  
[www.nes-wes.com](http://www.nes-wes.com)

## **NOVA Engineering & Environmental LLC**

Bob Hughes, President  
3900 Kennesaw 75 Parkway,  
Suite 100  
Kennesaw, Ga. 30144  
770-425-0777  
[www.usanova.com](http://www.usanova.com)

## **NV5 Global Inc.**

Dickerson Wright, Chairman,  
CEO  
200 South Park Rd #350  
Hollywood, Fla. 33021  
954.495.2112  
[www.NV5.com](http://www.NV5.com)

## **OHM Advisors**

Jonathan W. Kramer, PE,  
President  
34000 Plymouth Rd.  
Livonia, Mich. 48150  
7345226711  
[www.ohm-advisors.com](http://www.ohm-advisors.com)

## **Olsson Inc.**

Brad Strittmatter, CEO

601 P Street, Suite 200  
Lincoln, Neb. 68507  
402-474-6311  
[www.olsson.com](http://www.olsson.com)

## **Orbital Engineering Inc.**

Bob Lewis, CEO  
1344 Fifth Avenue  
Pittsburgh, Pa. 15219  
(412) 261-9100  
[www.orbitalenr.com](http://www.orbitalenr.com)

## **Otak Inc.**

Jim Hamann, CEO & President  
808 SW Third Avenue, Suite 800  
Portland, Ore. 97204  
503-287-6825  
[www.otak.com](http://www.otak.com)

## **P2S INC.**

Kevin L. Peterson, President /  
CEO  
5000 E. Spring Street., Suite 800  
Long Beach, Calif. 90815  
(562) 497-2999  
[p2sinc.com](http://p2sinc.com)

## **Page**

Thomas McCarthy, Senior  
Principal and CEO  
1615 M Street NW, Suite 700  
Washington, D.C. 20036  
202.909.4900  
[pagethink.com](http://pagethink.com)

## **Pape-Dawson Engineers Inc.**

Samuel G. Dawson, P.E., CEO  
2000 NW Loop 410  
San Antonio, Texas 78213  
210-375-9000  
[www.pape-dawson.com](http://www.pape-dawson.com)

## **Parametrix**

Jeff Peacock, President and CEO  
719 2nd Avenue, Suite 200  
Seattle, Wash. 98104

# ENR 2022 TOP 500 DESIGN FIRMS DIRECTORY

206-394-3700

[www.parametrix.com](http://www.parametrix.com)

## **Parkhill**

Jay Edwards, President

4222 85th Street

Lubbock, Texas 79423

806-473-2200

[www.parkhill.com](http://www.parkhill.com)

## **Parsons Corp.**

Carey Smith, President And CEO

5875 Trinity Parkway #300

Centreville, Va. 20120

nan

[www.parsons.com](http://www.parsons.com)

## **Patrick Engineering Inc.**

Daniel P. Dietzler, CEO

4970 Varsity Drive

Lisle, Ill. 60532

800.799.7050

[www.patrickco.com](http://www.patrickco.com)

## **PBK**

Dan Boggio, AIA, LEED AP BD+C,  
Executive Chairman

11 Greenway Plaza, Suite 2200

Houston, Texas 77046

800-938-7272

[www.pbk.com](http://www.pbk.com)

## **PBS Engineering and Environmental Inc.**

Brian Stanford, President/CEO

4412 SW Corbett Avenue

Portland, Ore. 97239

503.248.1939

[www.pbsusa.com](http://www.pbsusa.com)

## **Pennoni**

David DeLizza, President & CEO

1900 Market Street, Suite 300

Philadelphia, Pa. 19103

215-222-3000

[www.pennoni.com](http://www.pennoni.com)

## **Perkins Eastman**

Andrew Adelhardt III, Shawn

Basler, Nick Leahy, Co-CEOs

115 Fifth Avenue

New York, N.Y. 10003

212 353 7200

[www.perkinseastman.com](http://www.perkinseastman.com)

## **Perkins&Will**

Phil Harrison, CEO

The Wrigley Building, 410 North

Michigan Ave., Suite 1600

Chicago, Ill. 60611

312.755.0770

[perkinswill.com](http://perkinswill.com)

## **PGAL**

Jeff Gerber, AIA, CEO

3131 Briarpark Drive, Suite 200

Houston, Texas 77042

713-622-1444

[www.PGAL.com](http://www.PGAL.com)

## **Pickett and Associates, Inc.**

Mike Schnell, President

5010 W. Nassau Street

Tampa, Fla. 33607

8138777770

[www.pickettusa.com](http://www.pickettusa.com)

## **Plummer Associates Inc.**

Chris Young, PE, President &  
CEO

1320 S. University Drive, Suite  
300

Fort Worth, Texas 76107

817.806.1700

[www.plummer.com](http://www.plummer.com)

## **Pond**

Robert Williams, CEO

3500 Parkway Lane

Peachtree Corners, Ga. 30092

(678) 336-7740

[www.pondco.com](http://www.pondco.com)

## **Populous**

Bruce Miller, Senior Principal,

Managing Director-Americas

4800 Main St, Suite 300

Kansas City, Mo. 64112

816-221-1500

[populous.com](http://populous.com)

## **POWER Engineers Inc.**

James Haynes, President and  
CEO

3940 Glenbrook Drive

Hailey, Idaho 83333

2087883456

[powereng.com](http://powereng.com)

## **Powers Brown Architecture**

Jeffrey Brown, CEO

2100 Travis St, Suite 501

Houston, Texas 77002

713.224.0456

[powersbrown.com](http://powersbrown.com)

## **PRIME AE Group Inc.**

Kumar Buvanendaran, President  
and CEO

5521 Research Park Drive, Suite  
300

Baltimore, Md. 21228

4106543790

[www.primeeng.com](http://www.primeeng.com)

## **Primera Engineers Ltd.**

Erin Inman, President & CEO

100 South Wacker Drive, Suite  
700

Chicago, Ill. 60606

312-606-0910

[www.PrimeraEng.com](http://www.PrimeraEng.com)

## **Primoris**

Tom McCormick, President and  
CEO

2300 N. Field Street Suite 1900

Dallas, Texas 75201

# ENR 2022 TOP 500 DESIGN FIRMS DIRECTORY

nan  
[www.prim.com](http://www.prim.com)

## **Professional Engineering Consultants P.A.**

J. P. Surmeier PE, President  
303 South Topeka  
Wichita, Kan. 67202  
3162622691  
[www.pec1.com](http://www.pec1.com)

## **PS&S**

John Sartor, P.E., President and CEO  
67A Mountain Blvd Ext  
Warren, N.J. 07059  
732-560-9700  
[www.psands.com](http://www.psands.com)

## **PSOMAS**

Steve Margaroni, CEO  
100 Corporate Pointe, Suite 265  
Culver City, Calif. 90230  
213-223-1400  
[www.psomas.com](http://www.psomas.com)

## **PVE LLC**

James M. Venture, CEO  
(CEO)/Principal  
2000 Georgetown Drive, Suite 101  
Sewickley, Pa. 15143  
724-444-1100  
[www.pve-llc.com](http://www.pve-llc.com)

## **Quattrocchi Kwok Architects**

Mark Quattrocchi,  
Founder/Owner  
636 5th Street  
Santa Rosa, Calif. 95404  
707-576-0829  
[www.qka.com](http://www.qka.com)

## **Quiddity Engineering**

Robert L. Aylward, President & CEO

6330 West Loop South, Suite 150  
Bellaire, Texas 77401  
713.777.5337  
[www.quiddity.com](http://www.quiddity.com)

## **Quinn Evans**

Alyson Steele, CEO and President  
219 1/2 N Main Street  
Ann Arbor, Mich. 48104  
734-663-5888  
[www.quinnevans.com](http://www.quinnevans.com)

## **R&M Consultants Inc.**

Lendle Story, PLS, CEO  
9101 Vanguard Drive  
Anchorage, Alaska 99507  
907-522-1707  
[www.rmconsult.com](http://www.rmconsult.com)

## **Raba Kistner Inc.**

Chris L. Schultz, President  
12821 West Golden Lane  
San Antonio, Texas 78249  
210-699-9090  
[www.rkci.com](http://www.rkci.com)

## **Ramboll**

Jens-Peter Saul, Group CEO  
4245 North Fairfax Drive, Suite 700  
Arlington, Va. 22203  
1 703 516 2300  
[ramboll.com](http://ramboll.com)

## **RCM Technologies Inc.**

Bradley S. Vizi, Executive  
Chairman & President  
2500 McClellan Avenue, Suite 350  
Pennsauken, N.J. 08109  
(856) 356-4500  
[www.rcmt.com](http://www.rcmt.com)

## **RDC-S111**

Brad Williams, AIA, CEO  
245 East Third Street

Long Beach, Calif. 90802  
562-628-8000  
[rdc-s111.com](http://rdc-s111.com)

## **RDG Planning & Design**

Justin Platts, PLA, Principal  
301 Grand Avenue  
Des Moines, Iowa 50309  
515-288-3141  
[www.rdgusa.com](http://www.rdgusa.com)

## **Rebel Design+Group**

Douglas DeBoer, Founder /  
Owner / CEO  
2554 Lincoln Blvd, Suite 725  
Marina Del Rey, Calif. 90292  
800.92.REBEL  
[www.rebeldesign.com](http://www.rebeldesign.com)

## **Remington & Vernick Engineers Inc.**

Leonard A. Faiola, PE, PP, CME,  
President & CEO  
2059 Springdale Road  
Cherry Hill, N.J. 08003  
856-795-9595  
[www.rve.com](http://www.rve.com)

## **RETTEW Associates Inc.**

Clayton Bubeck, CEO  
3020 Columbia Avenue  
Lancaster, Pa. 17603  
1-800-738-8395  
[www.rettew.com](http://www.rettew.com)

## **RJN Group Inc.**

Paul Costa, President and CEO  
200 West Front Street  
Wheaton, Ill. 60187  
6306824700  
[www.rjn.com](http://www.rjn.com)

## **RK&K**

Miriam Kronisch, Partner  
700 East Pratt Street, Suite 500

# ENR 2022 TOP 500 DESIGN FIRMS DIRECTORY

Baltimore, Md. 21202

## **RMA Group**

Ed Lyon, CEO  
12130 Santa Margarita Couty  
Rancho Cucamonga, Calif. 91730  
909 989 1751  
[www.rmacompanies.com](http://www.rmacompanies.com)

## **RMF Engineering Inc.**

Ken Pitz, President  
5520 Research Park Drive  
Baltimore, Md. 21228  
8009385760  
[www.rmfc.com](http://www.rmfc.com)

## **Robert A.M. Stern Architects**

nan, nan  
One Park Avenue  
New York, N.Y. 10016  
212-967-5100  
[www.ramsa.com](http://www.ramsa.com)

## **Ross & Baruzzini Inc.**

Bill Overturf, CEO  
6 South Old Orchard  
St. Louis, Mo. 63119  
3149188383  
[www.rossbar.com](http://www.rossbar.com)

## **ROWE Professional Services Co.**

Leanne Panduren, PE,  
President/CEO  
540 S. Saginaw Street, Suite 200  
Flint, Mich. 48502  
(810) 341-7500  
[www.roweps.com](http://www.roweps.com)

## **RRC Power & Energy LLC**

Bill Bong, President  
810 Hesters Crossing Road, Suite  
120  
Round Rock, Texas 78681

512.992.2087  
[www.rrccompanies.com](http://www.rrccompanies.com)

## **RRMM Architects**

Duane Harver, CEO  
1317 Executive Blvd  
Chesapeake, Va. 23320  
757-622-2828  
[www.rrmm.com](http://www.rrmm.com)

## **RS&H Inc.**

David T. Sweeney,  
President/CEO  
10748 Deerwood Park  
Boulevard So.  
Jacksonville, Fla. 32256  
904-256-2500  
[www.rsandh.com](http://www.rsandh.com)

## **RSP**

David Norback, President  
1220 Marshall Street NE  
Minneapolis, Minn. 55413  
612.677.7100  
[rsparch.com](http://rsparch.com)

## **RTM Engineering Consultants LLC**

Tony Mirchandani, CEO  
650 E. Algonquin Road, Suite 250  
Schaumburg, Ill. 60173  
857-756-4180  
[www.rtmec.com](http://www.rtmec.com)

## **Rule Joy Trammell + Rubio LLC**

Dan Joy, Partner/Principal  
300 Galleria Parkway, Suite 740  
Atlanta, Ga. 30339  
770-661-1492  
[www.rjtrdesign.com](http://www.rjtrdesign.com)

## **S&B Engineers and Constructors Ltd.**

Brook Brookshire, CEO  
7825 Park Place Blvd.

Houston, Texas 77087  
713-645-4141  
[www.sbec.com](http://www.sbec.com)

## **S&ME Inc.**

Matt Ryan, President and CEO  
2724 Discovery Drive, Suite 120  
Raleigh, N.C. 27616  
800-849-2517  
[www.smeinc.com](http://www.smeinc.com)

## **Salas O'Brien**

Darin Anderson, Chairman &  
CEO  
8825 Research Drive  
Irvine, Calif. 92618  
877.725.2755  
[salasobrien.com](http://salasobrien.com)

## **SAM LLC**

Christopher M. Solomon, RPLS,  
President and CEO  
4801 Southwest Parkway, Bldg.  
2, Ste. 100  
Austin, Texas 78735  
512-447-0575  
[www.sam.biz](http://www.sam.biz)

## **Sanborn Head & Associates Inc.**

Barret Cole, PG, President and  
CEO  
20 Foundry Street  
Concord, N.H. 03301  
603.229.1900  
[sanbornhead.com](http://sanbornhead.com)

## **Sargent & Lundy**

Thomas R. White, President,  
Chairman & CEO  
55 E Monroe St  
Chicago, Ill. 60603  
312-269-2000  
[www.sargentlundy.com](http://www.sargentlundy.com)

# ENR 2022 TOP 500 DESIGN FIRMS DIRECTORY

## **Sasaki**

James Miner, AICP, CEO,  
Principal  
110 Chauncy Street  
Boston, Mass. 02111  
1 617 926 3300  
[sasaki.com](http://sasaki.com)

## **SB Architects**

Scott Lee, President & Principal  
1 Beach Street Suite 101  
San Francisco, Calif. 94133  
415-673-8990  
[sb-architects.com](http://sb-architects.com)

## **Schmidt Associates**

Sarah Hempstead, CEO/Principal  
415 Massachusetts Ave  
Indianapolis, Ind. 46204  
317-263-6226  
[www.schmidt-arch.com](http://www.schmidt-arch.com)

## **Schnabel Engineering**

Walter J. Rabe, PE,  
President/CEO  
9800 JEB Stuart Parkway, Suite  
200  
Glen Allen, Va. 23059  
804-264-3222  
[www.schnabel-eng.com](http://www.schnabel-eng.com)

## **SCS Engineers**

James J. Walsh, President/CEO  
3900 Kilroy Airport Way  
Long Beach, Calif. 90806  
562-426-9544  
[www.scsengineers.com](http://www.scsengineers.com)

## **SEPI**

Sepi Saidi, CEO  
1 Glenwood Avenue, Suite 600  
Raleigh, N.C. 27603  
919.789.9977  
[www.sepiinc.com](http://www.sepiinc.com)

## **SGA**

Joe Campanale, Controller  
200 High St.  
Boston, Mass. 02110-3036  
6177789056  
[sga-arch.com](http://sga-arch.com)

## **Shannon & Wilson Inc.**

Gregory R. Fischer, President  
400 N 34th Street, Suite 100  
Seattle, Wash. 98103  
206-632-8020  
[www.shannonwilson.com](http://www.shannonwilson.com)

## **Sheehan Nagle Hartray Architects Ltd.**

Neil Sheehan, President  
130 East Randolph Street, Suite  
3100  
Chicago, Ill. 60601  
312 633 2900  
[www.snh-a.com](http://www.snh-a.com)

## **Shepley Bulfinch**

Angela Watson, FAIA, President  
and CEO  
2 Seaport Lane, Fl 12  
Boston, Mass. 02210  
617 423 1700  
[shepleybulfinch.com](http://shepleybulfinch.com)

## **Shive-Hattery**

Jennifer Bennett, President, CEO  
222 Third Avenue SE, Suite 300  
Cedar Rapids, Iowa 52401  
800.798.0313  
[www.shive-hattery.com](http://www.shive-hattery.com)

## **Short Elliott Hendrickson Inc. (SEH)**

David Ott, CEO/President  
3535 Vadnais Center Drive  
St. Paul, Minn. 55110  
800.325.2055  
[www.sehinc.com](http://www.sehinc.com)

## **Simpson Gumpertz & Heger**

James Parker, CEO  
480 Totten Pond Road  
Waltham, Mass. 02453  
781.907.9000  
[www.sgh.com](http://www.sgh.com)

## **Skidmore Owings & Merrill**

Laura Ettelman, Xuan Fu, Carrie  
Byles, Executive Committee  
7 World Trade Center, 250  
Greenwich Street  
New York, N.Y. 10007  
212-298-9300  
[www.som.com](http://www.som.com)

## **SME**

Mark K. Kramer, PE, CEO  
43980 Plymouth Oaks Boulevard  
Plymouth, Mich. 48170  
7344549900  
[www.sme-usa.com](http://www.sme-usa.com)

## **Smith Seckman Reid Inc.**

Steve Lane, PE, DEE, CEO and  
Chair  
2995 Sidco Drive  
Nashville, Tenn. 37204  
615-383-1113  
[www.ssr-inc.com](http://www.ssr-inc.com)

## **SmithGroup**

Mike Medici, President and  
Managing Partner  
500 Griswold Street, Suite 1700  
Detroit, Mich. 48226  
3139833600  
[www.smithgroup.com](http://www.smithgroup.com)

## **SMMA | Symmes Maini & McKee Associates**

Ara Krafian, Chairman,  
President, CEO  
1000 Massachusetts Avenue  
Cambridge, Mass. 02138

# ENR 2022 TOP 500 DESIGN FIRMS DIRECTORY

nan  
[www.smma.com](http://www.smma.com)

## **SNC-Lavalin Inc.**

Ian Edwards, President & CEO  
801 2nd Ave  
Tampa, Fla. 33607  
1 813 282 7275  
[www.snclavalin.com/en](http://www.snclavalin.com/en)

## **Solomon Cordwell Buenz (SCB)**

Chris Pemberton, President  
625 North Michigan Avenue,  
Suite 800  
Chicago, Ill. 60611  
nan  
[www.scb.com](http://www.scb.com)

## **Souder Miller & Associates**

Karl Tonander, CEO  
5454 Venice Avenue NE  
Albuquerque, N.M. 87113  
505-299-0942  
[www.soudermiller.com](http://www.soudermiller.com)

## **SPEC Services Inc.**

Kim R. Henry, President/CEO  
10540 Talbert Ave., Suite 100  
East  
Fountain Valley, Calif. 92708  
(714) 963-8077  
[specservices.com](http://specservices.com)

## **SRF Consulting Group Inc.**

Todd Polum, President and CEO  
1 Carlson Parkway North Suite  
150  
Minneapolis, Minn. 55447  
763.475.0010  
[www.srfconsulting.com](http://www.srfconsulting.com)

## **SSEO Group**

Vincent P DiPofi, CEO  
1001 Madison Avenue  
Toledo, Ohio 43604

419-255-3830  
[www.ssoe.com](http://www.ssoe.com)

## **Stanley Consultants**

Kate Harris, President & CEO  
225 Iowa Ave  
Muscatine, Iowa 52761  
563-264-6239

## **Stantec Inc.**

Gord Johnston, President and  
CEO  
38 Technology Drive  
Irvine, Calif. 92618  
9499236000  
[www.stantec.com](http://www.stantec.com)

## **Steinberg Hart**

David Hart, President & CEO  
818 West 7th Street, #1100  
Los Angeles, Calif. 90017  
213.629.0500  
[www.steinberghart.com](http://www.steinberghart.com)

## **Stellar**

Michael S. Santarone, CEO  
2900 Hartley Rd.  
Jacksonville, Fla. 32257  
904-260-2900  
[www.stellar.net](http://www.stellar.net)

## **Stewart**

Willy Stewart, CEO  
223 S. West Street, Suite 1100  
Raleigh, N.C. 27603  
919-380-8750  
[stewartinc.com](http://stewartinc.com)

## **STG Design**

Sandra Par t, CEO  
828 West 6th Street, #300  
Austin, Texas 78703  
512-899-3500  
[www.stgdesign.com](http://www.stgdesign.com)

## **Strand Associates Inc.**

Matt Richards, P.E., CEO  
910 West Wingra Drive  
Madison, Wis. 53715  
608-251-4843  
[www.strand.com](http://www.strand.com)

## **STUDIOS architecture**

Marc Pfenninger, Principal, CEO  
1625 M Street NW  
Washington, D.C. 20036  
2124314512  
[www.studios.com](http://www.studios.com)

## **STV Group Inc.**

Greg Kelly, P.E., President and  
CEO  
225 Park Avenue South  
New York, N.Y. 10003  
212.777.4400  
[www.stvinc.com](http://www.stvinc.com)

## **Sunrise Engineering Inc.**

Mark Huntsman, President/CEO  
25 East 500 North  
Fillmore, Utah 84631  
435.743.6151  
[www.sunrise-eng.com](http://www.sunrise-eng.com)

## **Superior Engineering LLC**

Thomas Gyure, CEO  
2345 167th Street  
Hammond, Ind. 46323  
219-844-7030  
[www.superiorengineering.com](http://www.superiorengineering.com)

## **SWCA Environmental Consultants**

Joseph J Fluder III, CEO /  
President  
20 E. Thomas Road, Suite 1700  
Phoenix, Ariz. 85012  
602.274.3831  
[www.swca.com](http://www.swca.com)

# ENR 2022 TOP 500 DESIGN FIRMS DIRECTORY

## **Syska Hennessy Group**

Cyrus Izzo / Gary Brennen, Co-  
Presidents  
1185 Avenue of the Americas  
New York, N.Y. 10036  
212.921.2300  
[www.syska.com](http://www.syska.com)

## **SYSTRA USA**

Kimberly Slaughter  
520 8th Avenue- Suite 2100  
New York, N.Y. 10018  
1 646 493 8341  
[www.systrausa.com/en](http://www.systrausa.com/en)

## **T&M Associates**

Gary C. Dahms, PE, PP, President,  
CEO  
11 Tindall Road  
Middletown, N.J. 07748  
732-671-6400  
[www.tandmassociates.com](http://www.tandmassociates.com)

## **T.Y. Lin International**

Matthew Cummings, President  
and CEO  
345 California Street, Suite 2300  
San Francisco, Calif. 94104  
1 (415) 291-3700  
[www.TYLin.com](http://www.TYLin.com)

## **TAI Engineering**

James J Angelo, President  
600 Red Brook Boulevard, Suite  
300  
Owings Mills, Md. 21117  
410-356-3108  
[www.taiengineering.com](http://www.taiengineering.com)

## **TAIT**

Trevor Tait, Managing Director  
701 N. Parkcenter Drive  
Santa Ana, Calif. 92705  
714-560-8200  
[www.tait.com](http://www.tait.com)

## **Taylor Design**

Kevin Hinrichs, President  
17850 Fitch  
Irvine, Calif. 92614  
949.574.1325  
[www.wearetaylor.com](http://www.wearetaylor.com)

## **Tectonic Eng'g Consult.**

**Geologists & Surveyors**  
Donald A. Benvie, P.E., P.G.,  
President & CEO  
70 Pleasant Hill Road, P.O. Box  
37  
Mountainville, N.Y. 10953  
800-829-6531  
[www.tectonicengineering.com](http://www.tectonicengineering.com)

## **TEECOM**

David Marks, President and CEO  
1333 Broadway Suite # 601  
Oakland, Calif. 94612  
1 (510) 337 2800  
[teecom.com](http://teecom.com)

## **Terracon Consultants Inc.**

M. Gayle Packer, President and  
CEO  
10841 S. Ridgeview Road  
Olathe, Kan. 66061  
(800) 593-7777  
[terracon.com](http://terracon.com)

## **Tetra Tech Inc.**

Dan Batrack, CEO  
3475 East Foothill Boulevard  
Pasadena, Calif. 91107  
626-351-4664  
[www.tetrattech.com](http://www.tetrattech.com)

## **The Beck Group**

Fred Perpall, CEO  
1601 Elm Street, Suite 2800  
Dallas, Texas 75201  
214.303.6200  
[www.beckgroup.com](http://www.beckgroup.com)

## **The Burke Group Ltd.**

Christopher B Burke, Chairman  
9575 W. Higgins Road, Suite 600  
Rosemont, Ill. 60018  
847-823-0500  
[www.cbbel.com](http://www.cbbel.com)

## **The EADS Group Inc.**

Thomas M. Reilly, P.E., President,  
C.E.O.  
1126 8th Avenue  
Altoona, Pa. 16602  
814-944-5035  
[www.eadsgroup.com](http://www.eadsgroup.com)

## **The Gateway Engineers Inc.**

Jason D. Jesso, CEO  
100 McMorris Rd  
Pittsburgh, Pa. 15205  
1-855-634-9284  
[www.gatewayengineers.com](http://www.gatewayengineers.com)

## **The LiRo Group**

Richard Cavallaro, CEO  
Three Aerial Way  
Syosset, N.Y. 11023  
516-938-5476  
[www.liro.com](http://www.liro.com)

## **The Mannik & Smith Group Inc.**

Dean Niese, President & CEO  
1800 Indian Wood Circle  
Maumee, Ohio 43537  
(419) 891-2222  
[www.manniksmithgroup.com](http://www.manniksmithgroup.com)

## **The Osborn Engineering Co.**

Gary Hribar, CEO  
1100 Superior Avenue, Suite 300  
Cleveland, Ohio 44114  
216-861-2020  
[www.osborn-eng.com](http://www.osborn-eng.com)

## **The S/L/A/M Collaborative**

Robert Pulito, Principal,



# ENR 2022 TOP 500 DESIGN FIRMS DIRECTORY

President & CEO  
80 Glastonbury Boulevard  
Glastonbury, Conn. 06033  
860.657.8077  
[www.slamcoll.com](http://www.slamcoll.com)

**The Thrasher Group Inc.**  
H. Wood Thrasher, President  
600 White Oaks Blvd  
Bridgeport, W.Va. 26330  
3046244108  
[thethrashergroup.com](http://thethrashergroup.com)

**The Vertex Cos. Inc.**  
William McConnell, CEO  
400 Libbey Parkway  
Weymouth, Mass. 02189  
888-298-5162  
[www.vertexeng.com](http://www.vertexeng.com)

**The Yates Cos. Inc.**  
William G. Yates, III, President  
104 Gully Avenue  
Philadelphia, Miss. 39350  
601-656-5411  
[www.wgyates.com](http://www.wgyates.com)

**ThermalTech Engineering Inc.**  
Jeffrey Celuch, President  
3960 Red Bank Rd., Ste 250  
Cincinnati, Ohio 45227  
513-561-2271  
[www.thermaltech.com](http://www.thermaltech.com)

**Thompson Engineering**  
John H. Baker III, CEO  
2970 Cottage Hill Rd., Suite 190  
Mobile, Ala. 36606  
251.666.2443  
[thompsonengineering.com](http://thompsonengineering.com)

**Thornton Tomasetti**  
Michael Squarzini & Peter  
DiMaggio, Co-CEO  
51 Madison Ave.  
New York, N.Y. 10010

1.917.661.7800  
[www.thorntontomasetti.com](http://www.thorntontomasetti.com)

**Tighe & Bond Inc.**  
Robert Belitz, CEO/President  
53 Southampton Road  
Westfield, Mass. 01085  
413-562-1600  
[www.tighebond.com](http://www.tighebond.com)

**Timmons Group**  
Brian Bortell, President and CEO  
1001 Boulders Parkway, Suite  
300  
Richmond, Va. 23225  
804-200-6500  
[www.timmons.com](http://www.timmons.com)

**TKDA**  
Thomas Stoneburner, PE,  
President / CEO  
444 Cedar Street, Suite 1500  
Saint Paul, Minn. 55101  
651-292-4400  
[www.tkda.com](http://www.tkda.com)

**TLC Engineering Solutions Inc.**  
Michael P. Sheerin, PE, LEED AP,  
CEO  
255 S. Orange Ave, Suite 1600  
Orlando, Fla. 32801  
407.841.9050  
[tlc-engineers.com](http://tlc-engineers.com)

**Tower Engineering  
Professionals**  
Andrew Haldane, CEO  
326 Tryon Road  
Raleigh, N.C. 27603  
919-661-6351  
[www.tepgroup.net](http://www.tepgroup.net)

**TowerPinkster**  
Bjorn Green, President / CEO  
242 E Kalamazoo Ave  
Kalamazoo, Mich. 49007

2693436133  
[towerpinkster.com](http://towerpinkster.com)

**TPG Architecture LLP**  
Frederic Strauss, Managing  
Executive  
31 Penn Plaza, 132 West 31st  
Street, 5th Floor  
New York, N.Y. 10001  
2127680800  
[www.tpgarchitecture.com](http://www.tpgarchitecture.com)

**Traffic Planning and Design  
Inc.**  
Kevin Johnson, President  
2500 E. High Street, Suite 650  
Pottstown, Pa. 19464  
610-326-3100  
[www.trafficpd.com](http://www.trafficpd.com)

**TranSystems**  
Richard Morsches, CEO  
2400 Pershing Road, Suite 400  
Kansas City, Mo. 64108  
(800) 800-5261  
[www.transystems.com](http://www.transystems.com)

**TRC Cos. Inc.**  
Christopher P. Vincze, Chairman  
and CEO  
21 Griffin Rd N  
Windsor, Conn. 01854  
(860) 385-6016  
[www.trccompanies.com](http://www.trccompanies.com)

**TreanorHL**  
Daniel R. Rowe, President  
1040 Vermont Street  
Lawrence, Kan. 66044  
785.842.4858  
[www.treanorhl.com](http://www.treanorhl.com)

**Twining Inc.**  
Robert M Ryan, CEO  
2883 East Spring Street, Suite  
300

# ENR 2022 TOP 500 DESIGN FIRMS DIRECTORY

Long Beach, Calif. 90806  
5624263355  
[www.twininginc.com](http://www.twininginc.com)

## **Ulteig Engineers Inc.**

Doug, Jaeger  
3350 38th Ave S  
Fargo, N.D. 58104

## **United Consulting**

Michael Rowe, President  
8440 Allison Pointe Blvd., Suite  
200  
Indianapolis, Ind. 46250  
(317) 895-2585  
[www.ucindy.com](http://www.ucindy.com)

## **United Engineers & Constructors Inc.**

Scott Reeder, CEO  
305 Fellowship Road, Suite 300  
Mt. Laurel, N.J. 08054  
1 844-860-0504  
[www.ueci.com](http://www.ueci.com)

## **Universal Engineering Sciences**

Brian Kirkpatrick, President  
3532 Maggie Boulevard  
Orlando, Fla. 32811  
(888) 824-7424  
[universalengineering.com](http://universalengineering.com)

## **V3 Cos.**

Louis J. Gallucci, President and  
CEO  
7325 Janes Avenue  
Woodridge, Ill. 60517  
6307249200  
[www.v3co.com](http://www.v3co.com)

## **Vanderweil Engineers**

Eli Sherman, President/CEO  
274 Summer Street  
Boston, Mass. 02210

617-423-7423  
[www.vanderweil.com](http://www.vanderweil.com)

## **VCBO Architecture**

Derek Payne, President  
524 South 600 East  
Salt Lake City, Utah 84102  
8015758800  
[www.vcbo.com](http://www.vcbo.com)

## **Veenstra & Kimm Inc.**

Forrest S. Aldrich, President  
3000 Westown Pkwy.  
West Des Moines, Iowa 50266-  
1320  
515-225-8000  
[www.v-k.net](http://www.v-k.net)

## **Verdantas**

Gerry Salontai, CEO  
6397 Emerald Parkway, Suite  
200  
Dublin, Ohio 43016  
9084821015  
[verdantas.com](http://verdantas.com)

## **VHB**

Michael Carragher, President &  
CEO  
101 Walnut Street  
Watertown, Mass. 02472  
617.924.1770  
[www.vhb.com](http://www.vhb.com)

## **VLK Architects Inc.**

Sloan Harris, CEO  
2821 W. 7th St. #300  
Fort Worth, Texas 76107  
817-633-1600  
[www.vlkarchitects.com](http://www.vlkarchitects.com)

## **Vocon**

Debbie Donley, Chief Experience  
Officer  
3142 Prospect Avenue  
Cleveland, Ohio 44115

2165880800  
[www.vocon.com](http://www.vocon.com)

## **Volkert Inc.**

Thomas Hand, CEO  
11 N. Water St Suite 18290  
Mobile, Ala. 36602  
251-342-1070  
[www.volkert.com](http://www.volkert.com)

## **Wade Trim**

Andrew McCune, PE,  
CEO/President  
500 Griswold Street, Suite 2500  
Detroit, Mich. 48226  
313-961-3650  
[www.wadetrim.com](http://www.wadetrim.com)

## **Waldemar S. Nelson and Co. Inc.**

Charles Nelson, Chairman  
1200 St. Charles Ave.  
New Orleans, La. 70130  
504-523-5281  
[www.wsnelson.com](http://www.wsnelson.com)

## **Walker Consultants**

Dave W. Ryan, PE, President &  
CEO  
4904 Eisenhower Blvd Suite 150  
Tampa, Fla. 33634  
1.800.860.1579  
[walkerconsultants.com](http://walkerconsultants.com)

## **Wallace Design Collective**

Tom Hendrick, PE, President and  
CEO  
200 E Brady St  
Tulsa, Okla. 74103  
800.364.5858  
[www.wallace.design](http://www.wallace.design)

## **Wallace Montgomery & Associates LLP**

Antonio Mawry, Partner  
10150 York Road, Suite 200

# ENR 2022 TOP 500 DESIGN FIRMS DIRECTORY

Hunt Valley, Md. 21030  
410-494-9093  
[www.wallacemontgomery.com](http://www.wallacemontgomery.com)

## **Walter P Moore**

Dilip Choudhuri, P.E., President  
& CEO

1301 McKinney  
Houston, Texas 77010  
800.364.7300  
[www.walterpmoore.com](http://www.walterpmoore.com)

## **Ware Malcomb**

Kenneth Wink, CEO

10 Edelman  
Irvine, Calif. 92618  
949.660.9128

[www.waremalcomb.com](http://www.waremalcomb.com)

## **WATG**

David Moore, President + CEO  
300 Spectrum Center Drive,  
Suite 500

Irvine, Calif. 92618  
1 (949) 574-8500

[www.watg.com](http://www.watg.com)

## **WDG Architecture**

Jeffrey Morris, AIA, Managing  
Principal

1025 Connecticut Ave NW, Ste.  
300

Washington, D.C. 20036  
2028578300

[www.wdgarch.com](http://www.wdgarch.com)

## **Wendel**

Stewart C. Haney, President &  
CEO

375 Essjay Road, Suite 200  
Williamsville, N.Y. 14221  
716-688-0766

[www.wendelcompanies.com](http://www.wendelcompanies.com)

## **Weston & Sampson**

Francis M. Ricciardi, PE, LSP,

CEO  
55 Walkers Brook Drive, Suite  
100

Reading, Mass. 01867  
800-726-7766

[westonandsampson.com](http://westonandsampson.com)

## **Westwood Professional Services**

Paul Greenhagen, CEO  
12701 Whitewater Drive, Suite  
300

Minneapolis, Minn. 55343  
888-937-5150

[www.westwoodps.com](http://www.westwoodps.com)

## **WGI Inc.**

David Wantman, PE, CEO  
2035 Vista Parkway  
West Palm Beach, Fla. 33411  
561-687-2220

[www.wginc.com](http://www.wginc.com)

## **Whitman Requardt and Associates LLP**

David B. McCormick,  
Administrative Partner  
801 South Caroline Street  
Baltimore, Md. 21231

410-235-3450

[www.wrallp.com](http://www.wrallp.com)

## **Whitney Bailey Cox & Magnani LLC**

Marco Legaluppi, President  
300 East Joppa Road  
Baltimore, Md. 21286

4105124500

[www.wbcm.com](http://www.wbcm.com)

## **Wiley|Wilson**

Neil E. McSweeney, President &  
CEO

127 Nationwide Drive  
Lynchburg, Va. 24502

434-947-1901  
[www.wileywilson.com](http://www.wileywilson.com)

## **Willdan**

Thomas D. Brisbin, CEO,  
Chairman of the Board  
2401 E. Katella Avenue, Suite  
300

Anaheim, Calif. 92806

714-940-6300

[www.willdan.com](http://www.willdan.com)

## **Wilson & Co. Inc. Engineers & Architects**

James A. Brady, President, CEO  
4401 Masthead Street NE, Suite  
150

Albuquerque, N.M. 87109

505-348-4000

[www.wilsonco.com](http://www.wilsonco.com)

## **Wiss Janney Elstner Associates**

William Nugent, President and  
CEO

330 Pfingsten Road

Northbrook, Ill. 60062

847-272-7400

[www.wje.cm](http://www.wje.cm)

## **WithersRavenel Inc**

James Canfield, President/CEO  
115 MacKenan Dr

Cary, N.C. 27511

919-469-3340

[www.withersravenel.com](http://www.withersravenel.com)

## **WK Dickson & Co. Inc.**

David L. Pond, President/CEO

1213 W. Morehead St, Suite 300

Charlotte, N.C. 28208

704-334-5348

[www.wkdickson.com](http://www.wkdickson.com)

## **Wold Architects and Engineers**

Vaughn Dierks, CEO

332 Minnesota Street, W2000

# ENR 2022 TOP 500 DESIGN FIRMS DIRECTORY

Saint Paul, Minn. 55101  
651-227-7773  
[www.woldae.com](http://www.woldae.com)

## **Wood**

Robin Watson, CEO  
14720 Katy Freeway  
Houston, Texas 77094  
1-832-809-8000  
[woodplc.com](http://woodplc.com)

## **Wood Rodgers Inc.**

Mark Rodgers, CEO  
3301 C Street, Bldg 100B  
Sacramento, Calif. 95816  
916-341-7760  
[www.woodrodgers.com](http://www.woodrodgers.com)

## **Woodard & Curran**

Alyson Watson, PE, CEO  
41 Hutchins Drive  
Portland, Maine 04102  
207.774.2112  
[www.woodardcurran.com](http://www.woodardcurran.com)

## **Woolpert Inc.**

Scott Cattran, President & CEO  
4454 Idea Center Blvd.  
Dayton, Ohio 45430  
937-461-5660  
[www.woolpert.com](http://www.woolpert.com)

## **Worley**

Chris Ashton, CEO and Managing  
Director  
5995 Rogerdale Road  
Houston, Texas 77072  
8323516000  
[www.worley.com](http://www.worley.com)

## **Wright-Pierce**

John Braccio, President/CEO  
600 Federal Street, Suite 2151  
Andover, Mass. 01821  
9784168035  
[www.wright-pierce.com](http://www.wright-pierce.com)

## **WRNS Studio**

Sam Nunes, Partner  
501 2nd Street, Suite 402  
San Francisco, Calif. 94107  
415.489.2224  
[www.wrnsstudio.com](http://www.wrnsstudio.com)

## **WSB**

Bret Weiss, President & CEO  
701 Xenia Avenue South, suite  
300  
Golden Valley City, Minn. 55416  
7635414800  
[www.ws beng.com](http://www.ws beng.com)

## **WSP USA**

Lou Cornell, CEO  
One Penn Plaza  
New York, N.Y. 10119  
212-465-5000  
[wsp.com](http://wsp.com)

## **Wunderlich-Malec Engineering Inc.**

Neal Wunderlich, President  
6101 Blue Circle Drive  
Eden Prairie, Minn. 55343  
952-833-3222  
[www.wmeng.com](http://www.wmeng.com)

## **Zachry Group**

John B. Zachry, CEO and  
Chairman  
527 Logwood Ave  
San Antonio, Texas 78221  
210.588.5000  
[www.zachrygroup.com](http://www.zachrygroup.com)

## **ZGF Architects**

Ted Hyman, FAIA, LEED AP  
BD+C, Managing Partner  
1223 SW Washington St., Suite  
200  
Portland, Ore. 97205  
503-224-3860  
[www.zgf.com](http://www.zgf.com)

## **Zyscovich Architects**

Bernard Zyscovich, President  
100 Biscayne Blvd., 27th Floor  
Miami, Fla. 33132  
305-372-5222  
[www.zyscovich.com](http://www.zyscovich.com)